



CITY OF
TEA TREE GULLY
Naturally Better

Playground guide

Register of Amendments

Last updated 18 January 2023

Amendment	Council Resolution	Date of Amendment
1. Addition of a new local level playspace at Maxlay Reserve, Modbury Heights.	1249	28 June 2022
2. Addition of a new local level playspace at Australia Reserve, Modbury.	1325	23 August 2022

Record number

D20/23500

Responsible Manager

Manager Civil Assets

Other key internal stakeholders

Group Coordinator, Operations, Fleet & Property Services
Manager Recreation & Leisure Services
Manager Community Development & Engagement
Manager Parks

Last reviewed

June 2020

Adoption reference

Endorsed by Council
14 December 2022

Resolution number

1060

Previous review

dates Nil

Legal requirement

Nil

Due date next review

February 2023

Playground data as at
30 June 2020

Contents

Introduction	1
References and other relevant documents	
Hierarchy	2
Playground Classifications	
Total number and classification of playgrounds	
Provisional service standards	
Development principles	5
Planning	
Relationship between playground and park	
Accessibility	
Diversity	
Creative, innovative, inclusive & fun	
Safety and risk	
Age groups	
Fencing	
Shade	
Nature play and incorporation of natural elements	
Inspections and maintenance	9
Inspections	
Maintenance	
Retention, re-use and refurbishment of equipment	10
Project methodology	11
Council priorities	
Budgeting	
Community engagement	
Design	
Procurement	
Review of playgrounds	13
Development service standards	14
Purpose	
Application	
Development service standards based on playground classifications	
Playground classifications	18
Local playgrounds	
Appendix 1 – Provisional service standards	20
Appendix 2 – Playground forward works plan	29



Introduction

Play has a key role within our community, and provides for the physical, mental, emotional and social development of our children and youth.

Play has a key role within our community, and is the foundation for the physical, mental, emotional and social development of our children and youth. Playgrounds and the parks that surround them provide a space where residents and families can connect, interact and create new friendships. These spaces play an important role in creating a sense of community and support physical, social and emotional wellbeing for the entire community.

The City of Tea Tree Gully is dedicated to encouraging play, and is responsible for ensuring accessible and safe environments are provided that promote and enhance the health and wellbeing of our community. Currently Council maintains in excess of 100 playgrounds across the City.

This guide defines the way in which the City of Tea Tree Gully provides, maintains and develops playgrounds across the City. This guide comprises:

- Playground hierarchy
- Provisional service standards
- Development principles
- Project methodology
- Development service standards
- Future works programs.

This guide will be supported by operational systems and processes that will manage the ongoing maintenance of all playgrounds.

References and other relevant documents

- City of Tea Tree Gully:
 - Strategic Plan 2025
 - Open Space Policy
 - Open Space Asset Management Plan
 - Community Engagement Public Consultation Policy
 - Tree Management Policy
 - Service standards (Technical Guides)
 - Modbury Precinct Activation Policy
 - Modbury Sporting Hub Master Plan Report
 - Modbury Heights Precinct Plan
 - Tea Tree Gully Township Precinct Plan
 - Long Term Financial Plan
 - Disability Access and Inclusion Plan
- Australian Standards:
 - AS 4685 (series)
 - AS 4422 Playground Surfacing. Specifications, Requirements & Test Methods
 - AS/NZS 2890.6-2009 Off-street parking for people with disabilities
 - AS 1428 (Parts 1-5) Design for access and mobility – General requirements for access
- River Torrens Linear Park Management Plan
- Local Government Association -- Playground Guide for Local Government 2015
- Government of South Australia:
 - Inclusive play – Guidelines for accessible playspaces
 - Inclusive SA – South Australia's First State Disability Inclusion Plan 2019–2023
 - Resilient East Climate Change Adaption Plan – November 2016.

Playground hierarchy

The playground hierarchy describes the four classifications of playgrounds: regional, district, neighbourhood and local. These classifications define the types of play equipment that would typically be provided within each playground.

The playground hierarchy also defines the distribution or provision of playgrounds and user catchments for each classification.

The hierarchy should be used to help guide the provision and development of playgrounds. When applying this hierarchy, considerations will also need to be given to factors that may affect the accessibility to a given site, such as:

- Proximity of the playground to other playgrounds
- Topography of the area
- Arterial roads
- Pedestrian connections
- Drains and services
- Creek lines
- Bus ways.

Total number and classification of playgrounds

Classification	Number
Local playground	96
Neighbourhood playground	17
District playground	3
Regional playground	3
119	

Local playground

Local playgrounds will primarily cater for those people living within walking distance of the playground.

These playgrounds are generally smaller in size, located on less developed parks and have limited play equipment. Local playgrounds will generally only cater for one age group and will be designed to cater for short term visits.

Catchment

Local playgrounds will generally service residents located within a 500m catchment radius.

Maintenance

- Routine visual inspections – weekly.
- Operational inspections – every 12 weeks.
- Comprehensive inspection – to be completed in accordance with AS 4685 (series).
- Playground cleaning to be completed on an as needs basis. Cleaning requirements to be assessed during operational inspections.

Neighbourhood playground

Neighbourhood playgrounds will offer diverse play opportunities that will draw people from the wider area.

Neighbourhood playgrounds will be larger and offer additional play opportunities compared to local playgrounds and will generally provide play opportunities for one or two age groups and may include some accessible, inclusive and sensory elements.

Neighbourhood playgrounds will be designed to

cater for medium term visits, typically greater than one hour in duration.

Catchment

Neighbourhood playgrounds will generally service residents located within a catchment radius of approximately 2 kilometres.

Maintenance

- Routine visual inspections – weekly.
- Operational inspections – every 12 weeks.
- Comprehensive inspection – to be complete in accordance with AS 4685 (series).
- Playground cleaning to be completed on a as needs basis. Cleaning requirements to be assessed during operational inspections.

District playground

District playgrounds will provide unique play opportunities and will be designed to attract users from surrounding suburbs and across the City.

District playgrounds will generally be co-located with significant open spaces e.g. sporting and community hubs.

District playgrounds will provide a range of play opportunities for all ages and abilities and include accessible, inclusive and sensory elements.

Supporting facilities will also be provided at district playgrounds to allow for extended visits.

Catchment

District playgrounds will generally service residents located within a catchment radius of approximately 4 kilometres.

Maintenance

- Routine visual inspections – weekly.
- Operational inspections – every 12 weeks.
- Comprehensive inspection – to be complete in accordance with AS 4685 (series).

- Playground cleaning to be completed on a as needs basis. Cleaning requirements to be assessed during operational inspections.

Regional playground

Regional playgrounds will be innovative and distinctive in their design and character and offer unique play and recreational opportunities that reflect the character of the City.

A regional playground will attract families from across and beyond the City, with facilities that support longer visits, e.g. celebrations, community groups and all-day events.

Regional playgrounds will provide equipment that caters for all ages and abilities including accessible, inclusive and sensory elements.

Catchment

Regional playgrounds will be distributed across the City in key high-profile locations which have the ability to attract residents from across the City as well as those from the wider Adelaide area.

Maintenance

- Routine visual inspections – weekly.
- Operational inspections – every 6 weeks.
- Comprehensive inspection – to be complete in accordance with AS 4685 (series).
 - Playground cleaning to be completed every 12 weeks. Cleaning to include all equipment and rubber playground surfacing.



Development principles

The following principles will be used to help guide the way in which the City of Tea Tree Gully develops its playgrounds.

Planning

The development of new playgrounds or upgrades to existing playgrounds above their current classification should be limited to areas where future population increases and significant changes to the local demographic are anticipated or actively promoted through urban renewal policies e.g. the Modbury Precinct.

Opportunities may arise to enhance a playground beyond its current classification. Should such opportunities arise, Council will apply responsible and strategic management in deviating from the directions, hierarchy or playground classifications detailed in this guide. When considering such a change, Council will consider the operational impacts of any such change as well as any additional capital development of the associated open space that may be triggered by a change to the existing playground hierarchy.

Relationship between playground and park

Regional playgrounds should be located on parks that receive the highest levels of maintenance and provision of park amenities. Local and neighbourhood playgrounds should be located on the lesser maintained and serviced parks around the City.

The classification of a playground does not need to match the classification of park or vice versa. In some instances, playground distribution or local constraints may require playgrounds to be located on parks where the classifications do not align.

The table below demonstrates the general relationship between playgrounds and the parks in

which they are located.

Classification	Park quality standard
Local	Basic - Moderate
Neighbourhood	Moderate - High
District	High
Regional	Premium

Park amenities will be provided and maintained in line with the service standards guidelines for parks.

As a minimum all playgrounds will have a park seat, a picnic setting, a litter bin, an irrigated or maintained (non-irrigated) grassed area suitable for unstructured and passive recreation and formalised pathway access to the playground. Park infrastructure and furniture will be provided in accordance with Council's service standards guidelines for parks.

Off-street parking should be considered when developing district and regional playgrounds, unless there is adequate on-street parking adjacent the reserve and the parking does not adversely impact on the safety of road users or local residents.

Accessibility

Playgrounds should be accessible from a formed pathway. Pathways will be provided in accordance with the park's level of service.

Playground design should consider user movement within the playground area and ensure that safe access can be achieved throughout the playground area(s) during peak periods of use.

'Access for all' play equipment will generally be

provided at district and regional playgrounds.

Where accessible equipment is provided, accessible pathways, playground surfacing, car parking and park amenities will also be considered. Council staff will also give consideration to AS/NZS 2890.6-2009 Off-street parking for people with disabilities and Pathways and Tactile Ground Surface Indicators AS 1428 (Parts 1-5) Design for access and mobility – General requirements for access.

Inclusive play opportunities should be considered for all playgrounds. Council will use the State Governments Inclusive Play – Guidelines for accessible playspaces to help guide design decisions.

Diversity

Playgrounds should be unique in design to provide diverse play opportunities across the City.

Playgrounds play an important role in ensuring the health and wellbeing of our children, youth and families. The Australian Government Department of Health Guidelines recommends that children aged 5-12 years should accumulate at least 60 minutes of moderate to vigorous intensity physical activity every day.

Given the increase in sedentary behaviours and trends toward reduced backyard sizes, playgrounds and public open space play a key role in encouraging families to go outside to walk, play and exercise. Recent studies have shown evidence that exercise provides benefits to both physical and mental health. It is therefore imperative that diverse play and recreational opportunities are provided across our City.

Playground design should engage with the surrounding natural environment to provide diverse structured and unstructured play opportunities.

Creative, innovative, inclusive and fun

All playgrounds should be developed to provide a high level of play value and incorporate elements which encourage and provide for:

- Development of physical and cognitive abilities
 - Equipment that challenges users and provides graduated risk
- Inclusive play, friendship, social interaction, participation and connection to community
 - Equipment that allows everyone to play – be it independently, in parallel or collectively, no matter their age or ability level
 - Community engagement in the design process
- Free, unstructured and imaginative play
 - Creating active, passive, interpretive and reflective spaces in playground and the surround landscape
- Access to nature
 - Integrating the playground with the surrounding natural environment.

Playgrounds may be integrated with landscape features to create unique play opportunities in place of traditional equipment. Such interventions may include but are not limited to earth mounds, imitation creek lines with integrated water play, natural boulders, and logs or large individual statement pieces of bespoke or proprietary play equipment in place of the standard playground layouts.

The development of entirely inclusive or accessible playgrounds should be limited to regional and district locations. Entirely inclusive or accessible playground developments will be considered by Council through an individual project nomination and as part of Council's annual business planning process.

Individual inclusive and accessible play elements may be included in neighbourhood and local playgrounds, however their inclusion should only be considered where existing park infrastructure supports their inclusion e.g. where accessible footpaths, carpark(s), playground surfacing and park amenities are already available or are proposed to be developed and funded as part of the project scope.

Safety and risk

User safety is essential when determining the location, design and management of playgrounds.

All playgrounds are to be developed in line with all relevant Australian Standards, principally AS 4685 (all parts) and AS 4422:2016.

Council understands that taking calculated and graduated risks is essential for good physical and mental development of children. The activity of play provides crucial opportunities for these learnings to take place. Challenge and graduated risk should be central to playground design, where appropriate.

Risk-taking is an essential feature of play and it's important to consider that in environments where children spend time playing. Play equipment provided by Council will aim to offer children the opportunity to encounter acceptable risks as part of a stimulating and challenging learning environment. The provision of equipment will aim to manage the balance between the need to offer risk and the need to keep children and playground users safe from harm (AS 4685.0:2017).

When assessing the risk associated with a particular playground, Council will take into account the context of the playground, its purpose and the likely users and utilise a risk benefit analysis rather than risk removal (AS 4685.0:2017).

Playgrounds should be located to maximise passive surveillance and have with consideration of the principles of Crime Prevention through Environmental Design (CPTED).

Where compliance to an existing Australian Standard cannot be achieved or a Standard does not currently exist, Council will apply a risk benefit analysis prior to approving a design for construction.

The use of rubber surfacing should generally be limited to regional and district playgrounds

or at locations which have a particular focus on accessible and inclusive play. The use of playground certified sand (soft fall) should be limited to higher profile locations. At all other locations the use of certified organic mulch should be promoted.

Trees around playgrounds should be selected, located and managed with safety and sustainability in mind (e.g. to minimise risks associated with falling limbs and debris).

Risks relating to dogs, fencing and the playground's condition should be managed through appropriate design, location and ongoing management.

Council should continue to assess playgrounds and the safety of equipment as part of day-to-day operations and reserve maintenance.

Age groups

Playgrounds should be provided for all children, including older children. For the purpose of this guide, play age groups are defined as:

- Junior 2-4 years
 - Equipment that is easily accessible e.g. closed stair and static access to play units and slides
- Young children 5-9 years
 - Equipment that offers additional challenge e.g. incorporation of dynamic elements
- Older children 10-14 years
 - Adventure style equipment, generally higher and with only dynamic access
 - Younger children (7-9 years) should also be able to use much of this equipment.

Fencing

The fencing of playgrounds will be considered where a playground is:

- Located close to a busy road, carpark or water

body e.g. creek or pond

- Located on a reserve that is used as a formalised off-leash dog park and the dog exercise area is not fenced
- Intended to cater for users, who may have a disability, that require an enclosed space e.g. autism.

Wherever possible, design solutions should be investigated and implemented to minimise the use of fencing.

Where fencing is to be included, fenced area should ideally include a 'park space' with a grassed area, pathways and park furniture and not simply a border to the playground area.

Shade

Playground shade sails and structures should only be considered where natural shade is not present and should generally be restricted to district and regional playgrounds. This restriction recognises the capital, maintenance and ongoing management costs associated with such structures.

Where shade sails or structures are approved, shade trees should also be planted at the time of construction. This will allow for the trees to mature and potentially replace the shade structure at the end of its useful life.

Where natural shade does not already exist and no shade structure is proposed, large shade and specimen trees should be planted to provide summer shade to the playground area. Tree species should be selected

to maintain and enhance the existing character of the park and be of a suitable species for planting near playgrounds and be selected in consideration of the Resilient East Climate Change Adaption Plan, June 2016.

When considering the installation of a shade structure, the period or duration of play should also be considered. Based on this consideration shades should not be constructed over local playgrounds but instead be limited to neighbourhood, district and regional playgrounds where the provision of equipment would allow for play periods in excess of one hour.

Shade structures will be considered as a separate budget item to the play equipment.

When assessing the requirement for the construction of a new permanent shade structure, Council will consider all factors outlined in AS 4685.

Nature play and incorporation of natural elements

All playgrounds should be designed to connect to and complement the surrounding landscape of the park or reserve in which they are placed. For this reason, nature-play specific developments should generally be restricted to parks with a native or natural character, thus allowing for unstructured and direct engagement with the natural environment beyond the designed or constructed elements.

Inspections and maintenance

Council will maintain all of its playgrounds in accordance with the relevant standards. Namely AS 4685 (series) and AS 4422 Playground Surfacing - Specifications, Requirements & Test Methods.

Inspections

New playground

Prior to opening, Council will complete a comprehensive post-installation inspection of all new playgrounds. This inspection will verify the playground equipment and surfacing conformance to AS 4685 and AS 4422 respectively.

Routine visual inspections

Visual inspections will be undertaken regularly to identify any obvious hazards. Such hazards that may result from wear and tear, vandalism or weather conditions. The frequency of these inspections will be based on the local conditions, frequency of use and manufacturer's instructions.

Operational inspections

Operational inspections will be carried out regularly, on a 6 or 12 week basis. These inspections will assess the operational functions and safety of the playground and its immediate surroundings.

Comprehensive annual inspections

Comprehensive annual inspections will be carried out on all playgrounds to determine conformance to all relevant parts of AS 4685 and to establish the overall level of safety of the equipment, foundations and playground surfaces.

Testing of impact attenuating surfaces – rubber surfacing, pine chip soft fall and sand

Playground soft fall shall be tested for conformance to AS 4422 every three years. Loose fill material shall be installed to a minimum depth of 300 mm and maintained to ensure it never drops below 200 mm (or as required depending of equipment fall height).

Competence of person performing inspections

All inspections will be conducted by a suitably trained and competent individual as defined in AS 4685.

Level of training, experience and competency may vary across the inspection types.

Maintenance

An immediate risk assessment will be undertaken to assess the safety implications of non-conformance following identification. The outcomes of this assessment will then inform the priority of and corrective action required.

All maintenance, inspection, repairs and replacements will be recorded in line with the Council Records Management Policy.

All playground equipment will be managed in line with the equipment manufacturer's recommendations.

New individual or holistic nature play developments will be considered on a case-by-case basis.

Retention, re-use and refurbishment of equipment

At time of renewal, Council will assess all existing equipment that is proposed to be renewed for possible retention in the new design, or refurbishment and re-use on the same or alternative site(s).

Prior to retention, re-use or refurbishment of equipment, a complete risk and condition assessment must be undertaken on the equipment including but not limited to structural assessment, compliance to relevant Australian Standards, and remaining useful life – both current and post refurbishment (where applicable).

Where reusable equipment is not going to be retained or incorporated into a new design, the equipment may be allocated to an existing playground which is currently under-serviced, as identified in the Council Playground Improvement Plan.



Project methodology

Council priorities

Nominations of playgrounds for inclusion in the Annual Business Plan as part of the annual playground program will give consideration to the Open Space Asset Management Plan, community needs and relevant service standards.

Designs for each playground will be developed by Council's Civil Assets Department and will reflect the directions from strategic documents, including Council's Strategic Plan, the Open Space Policy and this guide.

Playground designs should also take into consideration other internal work plans and programs including but not limited to irrigation replacement, landscape upgrades and beautification programs.

Internal works plans and programs will assist staff in the planning and prioritising of renewal, upgrade and/or construction of new playgrounds.

All works will be subject to Council's annual business planning process, or depending on the circumstances, may be presented to Council for approval.

Budgeting

The budget estimates contained in the Development service standards (page 15) are for the supply and installation playground equipment only.

The funding of associated site works, including but not limited to site demolition, civil and landscape works, will be in addition to the cost of the playground equipment and shall be considered by Council during the same annual business planning process as the playground equipment.

The cost of these associated works will be based on whole-of-site civil and landscape plans. These plans will be developed in accordance with the development service standards. These works may

include but are not limited to:

- Excavation of playground area
- Site clearance, demolition and base preparation
- Footpath construction
- Park furniture
- Park shelters
- Irrigation (turf and garden beds)
- Tree and shrub planting.

All associated works should be completed during the same year as playground renewal.

Asset renewals work may be brought forward to coincide with whole-of-site works.

Community engagement

The community will have the opportunity to comment on the proposed playground renewal and upgrades, and their views will be considered during the design process.

New playgrounds will be subject to community engagement. Community engagement will be conducted in accordance with Council's Community Engagement Public Consultation Policy.

The level of community engagement will generally be linked to the classification of the playground. The development of a regional playground may attract a higher level of community engagement when compared to the development of a local playground.

Design

Designs and specification will be developed by Council staff or suitably qualified and experienced consultants and will give consideration to the feedback received during the preceding community engagement.

Procurement

The procurement of playground equipment and associated works will be in line with Council's Procurement Policy.

Review of playgrounds

The provisional and development service standards and the classification of playgrounds may be reviewed at any time. The process for reclassifying a playground is prescribed in Council's Open Space Policy.

When a change in classification is proposed, Council should consider the total capital cost of the works including any cost associate to landscape or open space improvements that may be triggered by the reclassification of the playground, operational impacts and ongoing costs, impacts on the surrounding residents and the conditions of the sites Community Land Management Plan.

An assessment of a playground's provisional level of service should also be completed prior to the removal or reclassification of the playground, based on the classifications detailed in this

document, to ensure the equitable provision of playgrounds is maintained throughout the City.

Prior to removing a playground there should be a full assessment undertaken by Council, including community engagement to gauge support for the playground's potential retention, removal or replacement. This process may also include remote monitoring of playground use through the use of pedestrian counters and access gates or similar, or playground equipment use sensors.

The playground classification is based on a minimum requirement, not a fixed provision of equipment. Each classification has a range of provision. This means that there may be variation in the type, number (amount) and style of equipment between two playgrounds of the same classification.





Development service standards

Purpose

The playground development service standards define what will, could and should not be provided within a given playground, based on the playground's classification.

Application

The development service standards are to be used to guide the development of playgrounds across the City, rather than a rule which may prevent Council from responding to commercial, community and political opportunities which may arise. Such opportunities may include 'value ads' from a supplier, additional funding through grants or in response to community needs.

Where a proposal seeks to develop a playground beyond its current classification, direction must be sought from Council (or the CEO) prior to proceeding with the works.

When minimum equipment cannot be installed due to site conditions, available space or because it does not meet community needs or desires etc, alternative elements with equivalent 'play value' and range of play types may be considered.

The provision and development of new or additional public BMX tracks, dirt jumps, pump tracks, multi-use or mini sports courts, cricket pitches and similar recreational assets will be determined by the park's quality standard and the associated development service standard.

Development service standards based on playground classifications

Local playground

Types of equipment and play elements

- Local playgrounds will generally include the following play types:
 - Sliding, swinging, balancing, spinning and climbing.
- Play activities or types may be combined into a single unit or spread across a number of play elements.
- Individual play elements will generally be of a design which allows for use by a single user – eg a single person rocker or spinner.
- Passive and imaginative play elements may also be considered in replacement for more traditional play equipment. This may include nature play.

Indicative cost

\$40,000–\$50,000

(play equipment only – supply and installation)

Neighbourhood playground

Types of equipment and play elements

- Neighbourhood playgrounds will generally include the following play types:
 - Sliding, swinging, rocking, balancing, spinning and climbing
 - Passive and imaginative play which may include nature play.

- Play types may be spread across a number of elements and or a combined unit which allows for use by multiple users.
- Combined units should include multiple play types – eg a multi use play unit.
- Individual play elements should be of a design which allows for use by multiple users – eg a multi-person rocker or spinner.

Indicative cost

\$65,000–\$85,000

(play equipment only – supply and installation)

District playground

Types of equipment and play elements

- District playgrounds will generally include the following play types:
 - Sliding, swinging, rocking, balancing, spinning and climbing
 - Passive and imaginative play including sand and water play
 - Nature play
 - Inclusive and sensory activities.
- Play types shall be provided for users across a range of ages and abilities and in various configurations with progressive levels of challenge.
- Play types should generally be provided to allow for both individual and group play.

Indicative cost

\$90,000–\$120,000

(play equipment only – supply and installation)

Regional playground

Types of equipment and play elements

- Regional playgrounds will generally include the following play types:
 - Sliding, swinging, rocking, balancing, spinning and climbing
 - Passive and imaginative play including sand and water play
 - Nature play
 - Inclusive, accessible and sensory activities.
- Play types shall be provided for all ages and abilities and in various configurations with progressive levels of challenge.
- Play activities and types should be provided to allow for both group and individual play and where ever possible play equipment should be inclusive and accessible.

Indicative cost

Playground equipment costs to be based on site specific design.

When deciding what type of playground or arrangement of play equipment or elements are to be included at a given site, Council will consider the following:

- 1. Classification of the playground – local, neighbourhood, district or regional*
- 2. Strategic objectives outlined in this guide*
- 3. Style and type of equipment already available at surrounding playgrounds – eg playground within 500 m of the proposed works*
- 4. Feedback received during community engagement.*



Playground classifications

Local playgrounds

- Alicante Reserve Playground
- Apex Reserve Playground
- Aspen Reserve Playground
- Atlantis Reserve Playground (Kenneally Court)
- Barmera Reserve Playground
- Barns Reserve Playground
- Barracks Reserve Playground
- Beckman Reserve Playground
- Beckman Reserve Nature Play
- Bell Reserve Playground
- Bentley Reserve Playground
- Bernacchi Reserve Playground
- Billabong Reserve Playground
- Brassington Reserve Playground
- Callitris Reserve Playground
- Canopus Reserve Playground
- Chinner Reserve Playground
- Cobbler Creek East Reserve Playground (Grenadine Avenue)
- Cobbler Creek West Reserve Playground (Landcare Site)
- Cobbler Creek West Reserve Playground (Olympiad Court)
- Cobbler Creek West Reserve Playground (Samuel Court)
- Coconut Reserve Playground
- Coolabah Reserve Playground
- Courtyard Reserve Playground (Glenbrae Close)
- Cronulla Reserve Playground
- Currawong Reserve Playground
- Deakin Reserve Playground
- Declivity Reserve Playground
- Dewer Reserve Playground
- Doxiadis Reserve Playground
- Dresden Reserve Playground
- Elysium Reserve Playground (Chatswood Grove)
- Emma Reserve Playground
- Eva Reserve Playground
- Fairleigh Reserve Playground
- Fairview Park Reserve Playground
- Famechon Reserve Playground
- Freshford Reserve Playground
- Gifford Reserve Playground
- Gilles Reserve Playground
- Grenache Reserve Playground
- Gunda Reserve Playground
- Hartog Reserve Playground
- Hazel Reserve Playground
- Hinkler Reserve Playground
- Hope Valley Sports Area Playground
- Huon Reserve Playground
- Hutt Reserve Playground
- Hyde Park Reserve Playground
- John Clarke Memorial Playground
- Jubilee Reserve Playground (Jubilee Way)
- Kempson Reserve Playground
- Kinnaird Reserve Playground
- Kirk Reserve Playground
- Korong Reserve Playground
- Ladywood Reserve Playground
- Lake View Reserve Playground
- Lambert Plantation Playground
- Landrien Reserve Playground
- Lumsden Reserve Playground
- Marengo Reserve Playground
- Marsha Reserve Playground
- Martindale Reserve Playground (Laburnum Drive)
- Marwick Reserve Playground
- McArdle Reserve Playground
- Modbury Sports Area Playground (Golden Grove Road)
- Namatjira Reserve Playground
- Neville Reserve Playground

-
- O’Bahn Linear Park North Playground (Baymor Court)
 - O’Bahn Linear Park North Playground (Meadowvale)
 - O’Bahn Linear Park South Playground (Malcolm)
 - Observation Reserve Playground
 - Palomino Reserve Playground
 - Pantowora Reserve Playground
 - Para Hills Reserve Playground
 - Pinewood Reserve Playground
 - Ridgehaven Reserve Playground
 - Roebling Reserve Playground
 - Saturn Reserve Playground
 - Shannon Reserve Playground
 - Sir Frank Berryman Reserve Playground
 - Sunhaven Reserve Playground
 - Sutherland Reserve Playground
 - Tasman Reserve Playground
 - Tea Tree Gully Sports Area Playground
 - Tristania Reserve Playground
 - Tuscan Reserve Playground
 - Ultra Reserve Playground
 - Verdant Reserve Playground (Bent Court)
 - Verdant Reserve Playground (Morrow Court)
 - Vine Reserve Playground
 - Vostok Reserve Playground
 - Vulcan Reserve Playground
 - Waterford Reserve Playground
 - Whinnen Reserve Playground
 - Whiting Reserve Playground

Neighbourhood playgrounds

- Bendigo Reserve Playground
- Burragah Reserve Playground
- Coulls Reserve Playground
- Dalaston Reserve Playground
- Greenwith Oval Playground
- Hargrave Reserve Playground

- John Eichner Memorial Reserve Playground
- Jubilee Reserve Playground (De Pledge Court)
- Kestral Reserve Playground
- Nagle Reserve Playground
- Nigel Gummow Park Playground
- Noya Reserve Playground
- Pedare Village Park Playground
- Solandra Reserve Playground
- Tilley Recreation Park Playground
- Valley View Reserve Playground
- Vista Reserve Playground

District playgrounds-

- Edinburgh Reserve Playground
- Illyarrie Reserve Playground
- Modbury Sports Area Playground (Ashley Avenue)

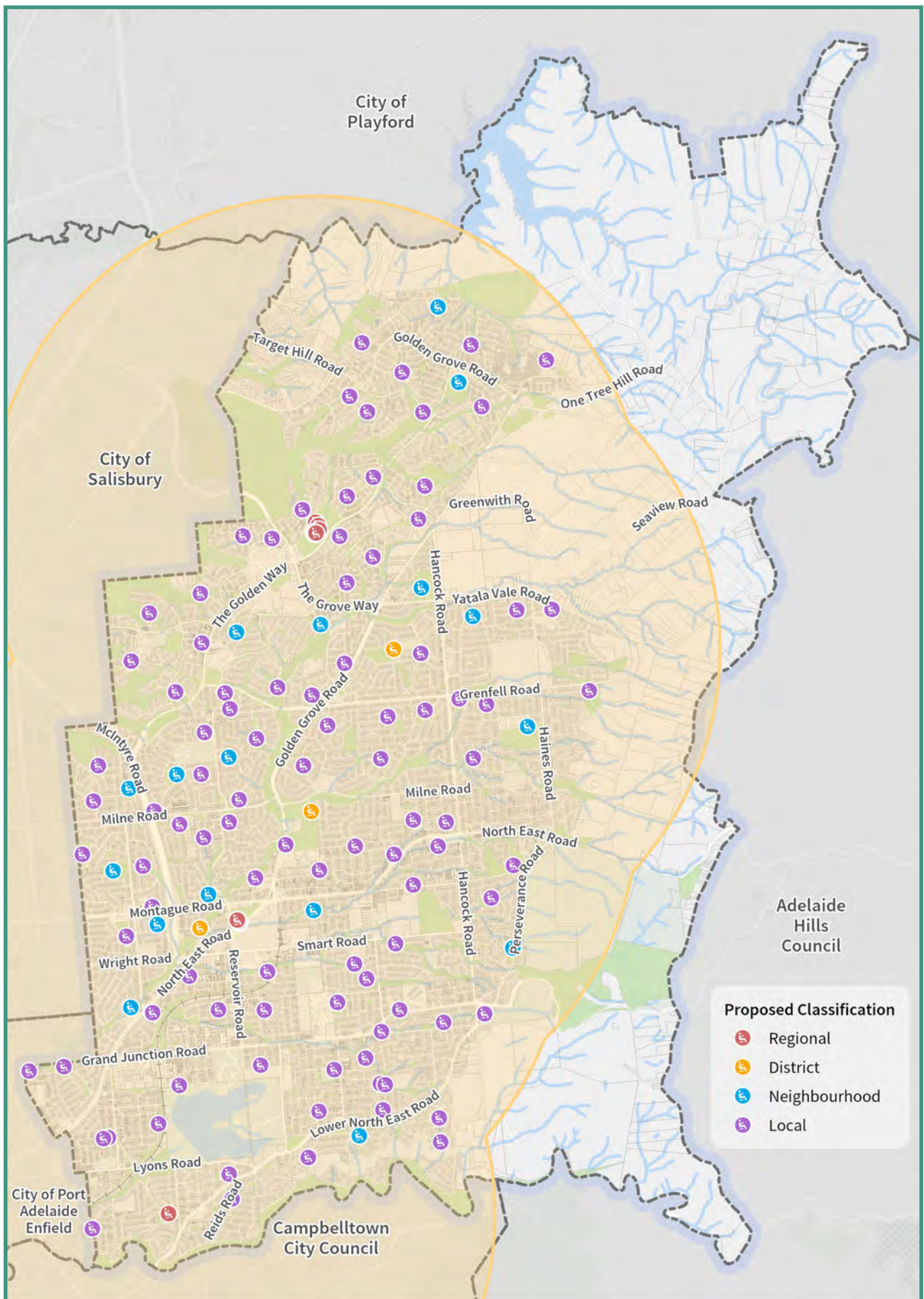
Regional playgrounds

- Balmoral Reserve Playground
- Civic Park Playground
- Golden Fields Reserve Playground

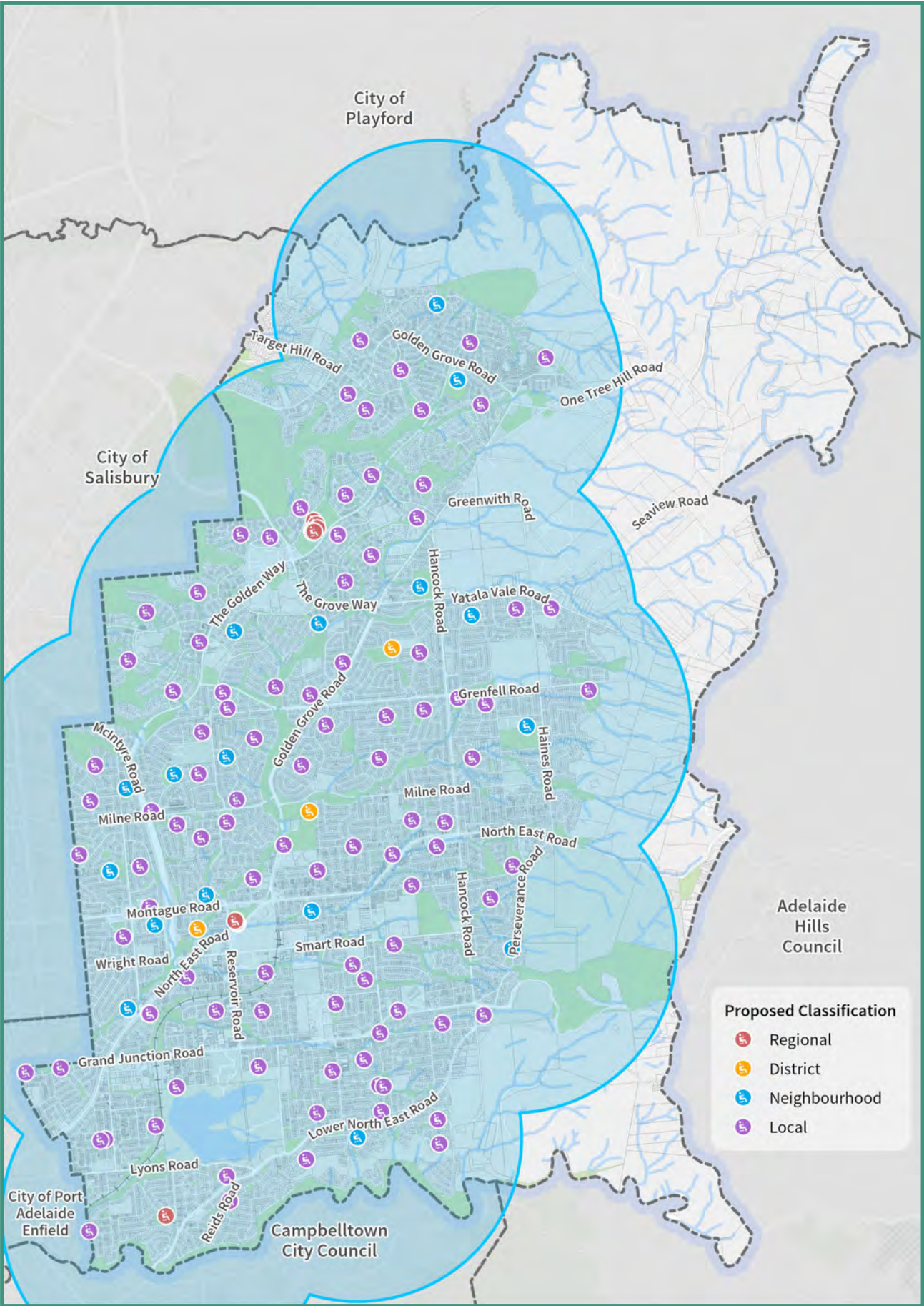
In addition to the playgrounds listed above, Council also provides and maintains playgrounds at Greenwith, Surrey Downs, Jubilee (2) and Akora Community Centres and individual park fitness equipment at Veronica Reserve.

Appendix 1: Provisional service standards

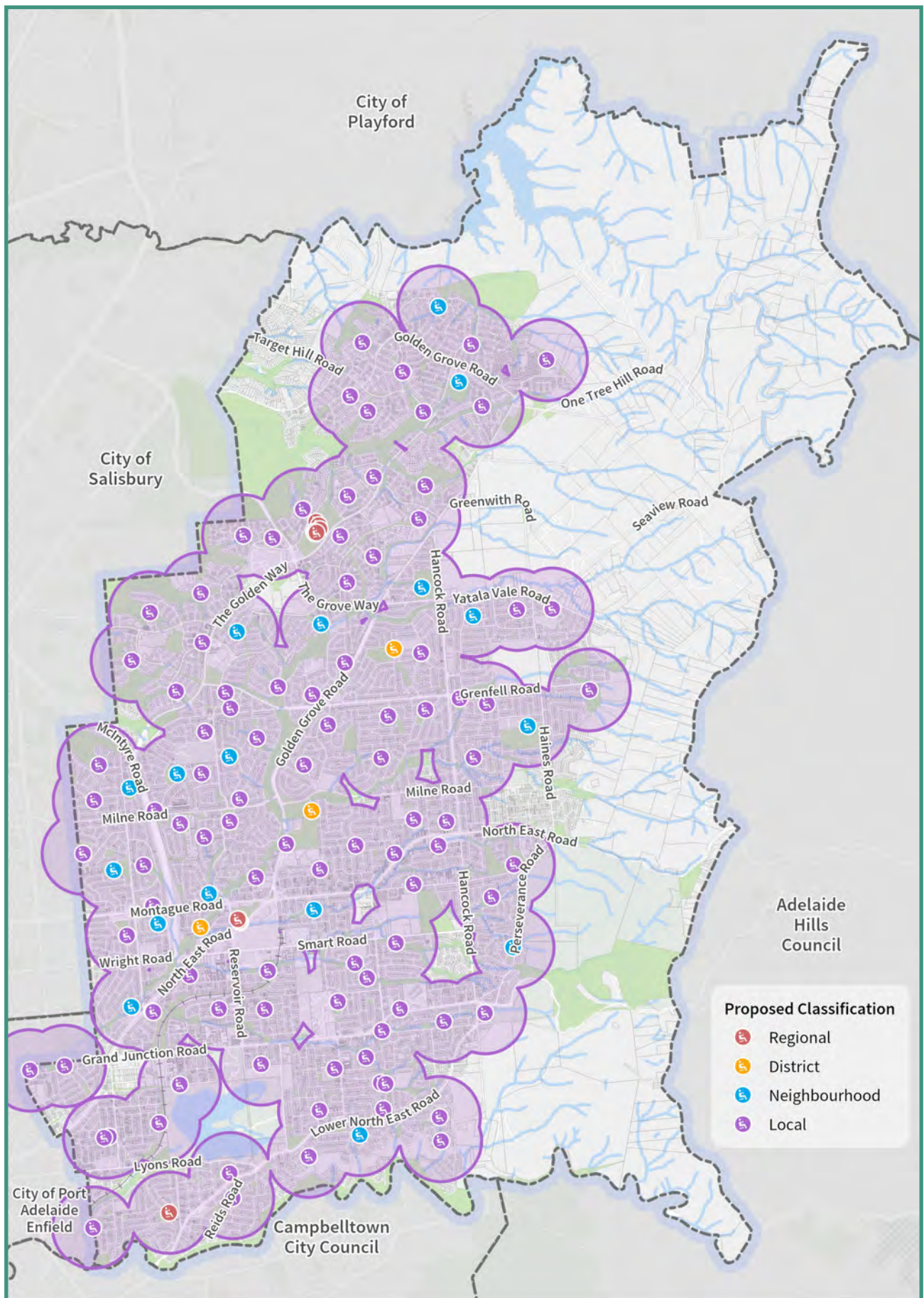
District playground distribution map



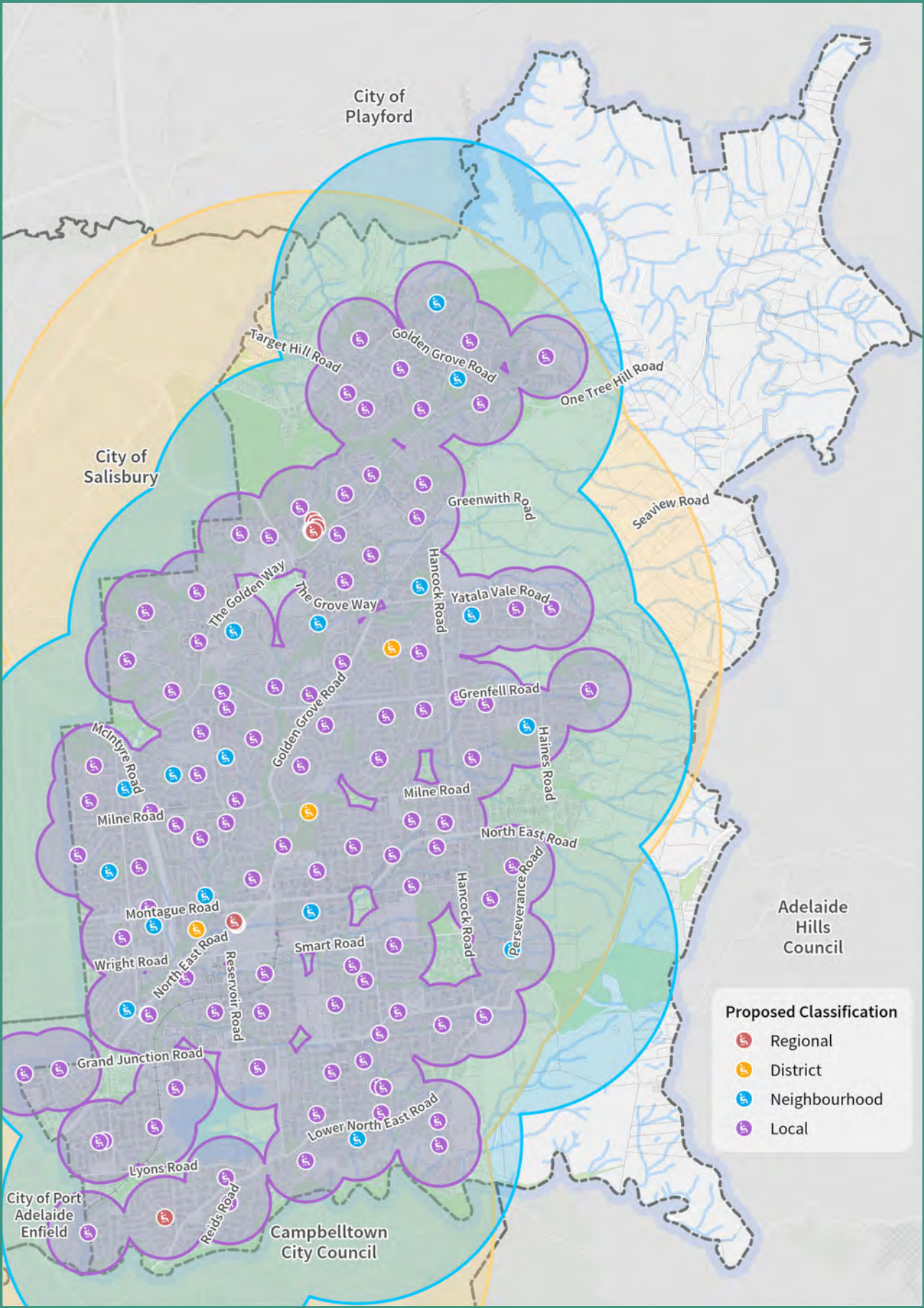
Neighbourhood playground distribution map at 2 km



Local playground distribution map at 500 m



All playground categories combined



Appendix 2: Forward works program

Forward works program

Capital renewals and playground improvement works have been developed based on the recommendation of Council's Open Space Asset Management Plan, Open Space Policy and outcomes of periodic and scheduled internal reviews of playgrounds service standards.

Council may elect to develop new, renew, upgrade, improve or reclassify playgrounds to respond to community needs and requirements in addition to the actions and works outlined below.

The equipment provided at both Regional and District Playgrounds should be reviewed every three to five years to identify opportunities for the potential early renewal, replacement and upgrade of existing equipment with modern and innovative play elements. These works will be considered as part of Council's annual business planning process

Playground renewals

Generally, playground equipment has a useful life of around 20-25 years depending on level of use, climatic conditions and the local environment.

When considering a playground for renewal, current and future community needs must be considered along with the playground's age, remaining useful life, overall condition, Council priorities and community needs and desires.

Playgrounds will be nominated for renewal in accordance with Council's Open Space Asset Management Plan.

Playground improvement plan

The purpose of the playground improvement plan is to address gaps where the current provision of equipment at a given playground fails to meet the base development service standard for that playground's current classification. Generally only playgrounds with a remaining useful life greater than 10 years are considered for inclusion on

the playground improvement plan. Playgrounds with a useful life less than 10 years will be managed through the annual playground renewal program or on a case by case basis. Works will be considered as part of Council's annual business planning process.

Playground name and current classification	Action	Action summary
Cobbler Creek West Reserve Playground (Olympiad) • Local	Improve to local	The existing playground equipment provided at this site does not meet minimum requirements for a local playground. Additional equipment should be installed to increase the service level to meet local classification.
Fairleigh Reserve Playground • Local	Improve to local	The existing playground equipment provided at this site does not meet minimum requirements for a local playground. Additional equipment should be installed to increase the service level to meet local classification.
Hutt Reserve Playground (Mary Jane) • Local	Improve to local	The existing playground equipment provided at this site does not meet minimum requirements for a local playground. Additional equipment should be installed to increase the service level to meet local classification.
Kinnaird Reserve Playground • Local	Improve to local	The existing playground equipment provided at this site does not meet minimum requirements for a local playground. Additional equipment should be installed to increase the service level to meet local classification.
Kirk Reserve Playground • Local	Improve to local	The existing playground equipment provided at this site does not meet minimum requirements for a local playground. Additional equipment should be installed to increase the service level to meet local classification.
Ultra Reserve Playground • Local	Improve to local	The existing playground equipment provided at this site does not meet minimum requirements for a local playground. Additional equipment should be installed to increase the service level to meet local classification.
Whiting Reserve Playground • Local	Improve to local	The existing playground equipment provided at this site does not meet minimum requirements for a local playground. Additional equipment should be installed to increase the service level to meet local classification.
Eva Reserve Playground • Local	Improve to local	The existing playground equipment provided at this site does not meet minimum requirements for a local playground. Additional equipment should be installed to increase the service level to meet local classification.

Hazel Reserve Playground • Local	Improve to local	The existing playground equipment provided at this site does not meet minimum requirements for a local playground. Additional equipment should be installed to increase the service level to meet local classification.
John Clarke Memorial Reserve Playground • Local	Improve to local	The existing playground equipment provided at this site does not meet minimum requirements for a local playground. Additional equipment should be installed to increase the service level to meet local classification.
Lumsden Reserve Playground • Local	Improve to local	The existing playground equipment provided at this site does not meet minimum requirements for a local playground. Additional equipment should be installed to increase the service level to meet local classification.
Hinkler Reserve Playground • Local	Improve to local	The existing playground equipment provided at this site does not meet minimum requirements for a local playground. Additional equipment should be installed to increase the service level to meet local classification.
Roebeling Reserve Playground • Local	Improve to local	The existing playground equipment provided at this site does not meet minimum requirements for a local playground. Additional equipment should be installed to increase the service level to meet local classification.

Playground upgrade plan

The purpose of the playground upgrade plan is to identify playgrounds that require upgrades (increase in service level) to address gaps in the City-wide provisional level of service for playgrounds or to meet community needs. Works will be considered as part of Council's annual business planning process.

Playground name	Address	Action	Action summary
Balmoral Reserve Playground	Balmoral Road, Dernancourt	Upgrade from district to regional	Additional equipment to be installed to increase service level to meet regional classification.
Edinburgh Reserve Playground	Edinburgh Road, Modbury	Upgrade from local to an all-inclusive playground and park space	Following endorsement of the Modbury Precinct – Dry Creek Corridor concept plan and Meadowvale Age Friendly Precinct, Edinburgh Playground and the surrounding park shall be upgraded to include an all-inclusive playground and park area.
Modbury Sports Area – Ashley Avenue Playground	Ashley Avenue, Ridgehaven	Upgrade from local to district	Additional equipment to be installed to increase service level to meet district classification.
Tilley Recreation Park Playground	Yatala Vale Road, Surrey Downs	Upgrade from local to neighbourhood	Additional equipment to increase service level to neighbourhood.
Vista Reserve Playground	Perseverance Road, Vista	Upgrade from local to neighbourhood	Additional equipment to be installed to increase service level to meet neighbourhood classification.

Potential new playgrounds

New playgrounds are proposed in to following location to address gaps in the City-wide provisional level of service for playgrounds. Works will be considered as part of Council's annual business planning process.

Reserve	Address	Proposed classification	Rational
River Torrens	Location to be confirmed	Neighbourhood or district	Address gap in the provision of playgrounds along a significant area of public open space. Consideration should also be given to the location and accessibility of playgrounds currently in place on the southern bank of the river and linear park.
Cobbler Creek West Reserve	Abbotsford Crescent	Local	Address gap in the provision of local playgrounds in this area. Topography and available space will need to be considered.
Brightlands Reserve	Milne Road, Banksia Park	Local	Address gap in the provision of local playgrounds in this area.
Kaplan Reserve	Uthwatt Court, St Agnes	Local	Address gap in the provision of local playgrounds in this area.
O'Bahn Linear Park South	Morgala and Waninga Drive	Local	Address gap in the provision of local playgrounds in this area.
Immanuel Reserve	Immanuel Drive, Greenwith	Local	Address gap in the provision of local playgrounds in this area. Topography and available space will need to be considered.
Maxlay Reserve	Maxlay Road	Local	Address gap in the provision of local playgrounds in this area. Council resolution 28 June 2022

Playground Guide Improvement Plan

The Playground Guide Improvement Plan identifies future areas of focus for Council.

These areas of focus will be addressed by staff, over the coming years, with the intention of developing new or revising existing service standards to address each of the areas.

Focus area	Action	Objective
<p>Development of unstructured play area(s).</p> <p>An unstructured play area is considered to be a space within a park where no formal or traditional playground equipment is provided. Instead naturally occurring materials are retained and managed on site for play and (where possible and appropriate) access to the surrounding natural environment is provided and encouraged via informal pathways to leading to creeks, gullies and other natural areas, etc.</p>	<p>Review and amend existing playground service standards to allow for and manage the development of unstructured play areas.</p>	<p>To develop a revised service standard and forward works proposal, for the consideration of Council, for the provision of unstructured play areas across the City.</p>
<p>Provision of shade structures</p>	<p>Complete gap analysis on the provision of playground shade structures across the City.</p> <p>Develop a new service standard for provision and development of playground shade structures.</p>	<p>To develop a new service standard and forward works proposal, for the consideration of Council, for provision, development and maintenance of playground shade structures across the City.</p>
<p>Playground use data</p>	<p>Develop a procedure to capture and utilise playground usage data to inform playground renewals, upgrades and reclassifications.</p>	<p>To develop and resource a robust, multi-faceted and quantifiable set of evaluation criteria which is to be used to prioritise forward work programs.</p>



C I T Y O F
TEA TREE GULLY
Naturally Better

571 Montague Road, Modbury 5092
PO Box 571, Modbury 5092
cttg.sa.gov.au