



LOCAL GOVERNMENT LAND BY-LAW 2015

By-law No. 3 of 2015

Application of Clause 5.6.2

At the Council meeting on 13 August 2019 the City of Tea Tree Gully determined, in accordance with Section 246(3)(e) of the Local Government Act 1999 and paragraph 9 of Council's Local Government Land By-law 2015 that Clause 5.6.2 of Council's Local Government Land By-law 2015 (prohibition of smoking or tobacco or any other substance) shall apply to the local government land known as Bentley Reserve Dog Park Holden Hill, Ashley Avenue Dog Park Reserve Ridgehaven and Pet Park Chestnut Reserve Golden Grove.

Consequently, smoking is not permitted on the portion of the land of the Bentley Reserve, Modbury Sports Area and Chestnut Reserve as defined below.

Portions of Bentley Reserve

Allotment 232 in D6985 Certificate of Title Volume 2936 Folio 94

Allotment 147 in D7685 Certificate of Title Volume 5390 Folio 546



Contact Details
PO Box 571, Modbury SA 5092
571 Morningside Road, Modbury
Tel: (08) 8397 7444
Fax: (08) 8397 7450
TTY: (08) 8397 7440
www.teatreegully.sa.gov.au



Disclaimer
© Copyright 2019. All rights reserved. All works and information displayed are subject to Copyright. For reproduction or publication, written permission must be sought from the City of Tea Tree Gully. Although every effort has been made to ensure the accuracy of the information displayed, the City of Tea Tree Gully, its agents, officers and employees make no representation, either express or implied, that the information disclosed is accurate or fit for

Portions of Modbury Sports Area

Allotment 6 in F10813 Certificate of Title Volume 5486 Folio 282

Allotment 244 in D6305 Certificate of Title Volume 3837 Folio 124



Contact Details
PO Box 571, Modbury SA 5092
571 Morphett Road, Modbury
Tel (08) 8367 7444
Fax (08) 8367 7430
TTY (08) 8367 7343
www.teatreegully.sa.gov.au

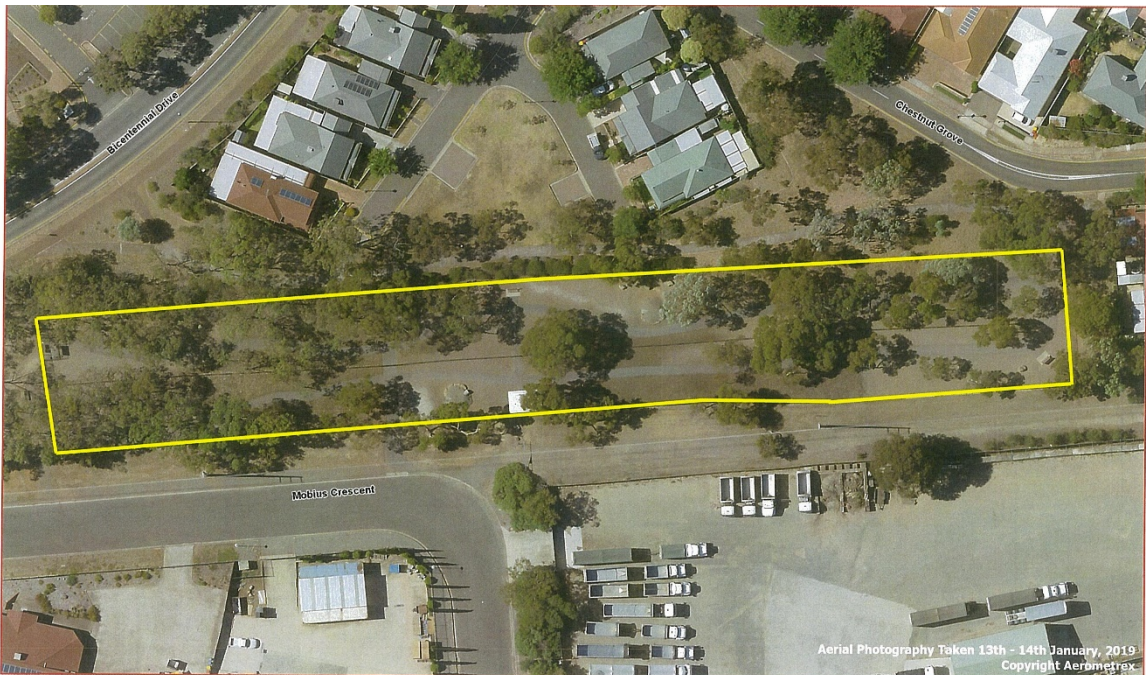


Disclaimer

© Copyright 2019. All rights reserved. All works and information displayed are subject to Copyright. For reproduction or publication, written permission must be sought from the City of Tea Tree Gully. Although every effort has been made to ensure the accuracy of the information displayed, the City of Tea Tree Gully, its agents, officers and employees make no representations, either express or implied, that the information displayed is accurate or fit for

Portion of Chestnut Reserve

Allotment 101 in D47309 Certificate of Title Volume 5416 Folio 294



Contact Details
PO Box 571, Modbury SA 5092
571 Morphett Road, Modbury
Tel (08) 8367 7444
Fax (08) 8367 7430
TTY (08) 8367 7343
www.teatreegully.sa.gov.au



Disclaimer

© Copyright 2019. All rights reserved. All works and information displayed are subject to Copyright. For reproduction or publication, written permission must be sought from the City of Tea Tree Gully. Although every effort has been made to ensure the accuracy of the information displayed, the City of Tea Tree Gully, its agents, officers and employees make no representations, either express or implied, that the information displayed is accurate or fit for