



LOCAL GOVERNMENT LAND BY-LAW 2015

By-law No. 3 of 2015

Application of Clause 5.6.2

At the Council meetings on 24 September 2019 and 8 October 2019 the City of Tea Tree Gully determined, in accordance with Section 246(3)(e) of the Local Government Act 1999 and paragraph 9 of Council's Local Government Land By-law 2015 that Clause 5.6.2 of Council's Local Government Land By-law 2015 (prohibition of smoking or tobacco or any other substance) shall apply to the local government land known as Greenwith Community Centre Carpark, Greenwith, Wynn Vale House Kindergarten carpark, Wynn Vale, Modbury North Kindergarten carpark, Modbury North, Modbury Community Learning Centre U3A carpark, Modbury, Banksia Park Primary School carpark, Spring Crescent, Banksia Park carpark, Surrey Downs Primary School carpark, Vine Street, Surrey Downs, Highbury Primary School carpark, Payne Street, Highbury, Wynn Vale Oval carpark, Wynn Vale.

Consequently, smoking is not permitted on the portion of the land of the Greenwith Community Centre Carpark, Wynn Vale House Kindergarten carpark, Modbury North Kindergarten carpark, Modbury Community Learning Centre U3A carpark, Banksia Park Primary School carpark, Surrey Downs Primary School carpark, Highbury Primary School carpark, Wynn Vale Oval carpark, as defined below.

Portions of Greenwith Community Centre carpark
Allotment 511 in D76200 Certificate of Title Volume 6018 Folio 720



Portion of Jubilee Reserve known as Wynn Vale House Kindergarten carpark
Allotment 118 in D9816 Certificate of Title Volume 6065 Folio 915



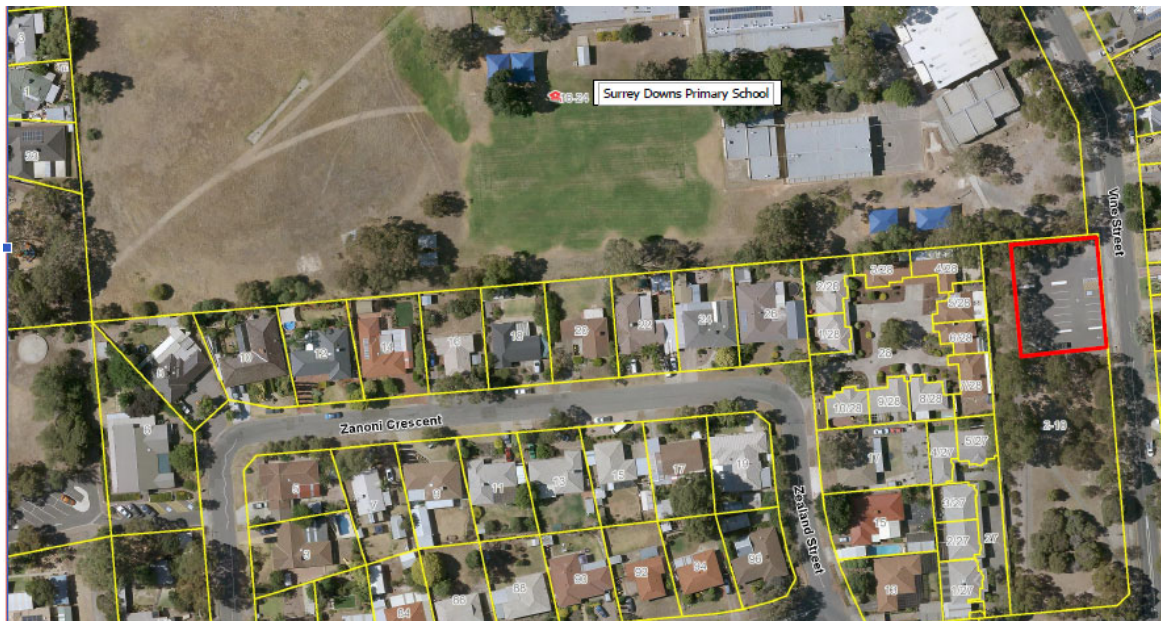
Portion of Burragah Recreation Centre known as Modbury North Kindergarten Carpark
Allotment 153 in D33375 Certificate of Title Volume 5161 Folio 879



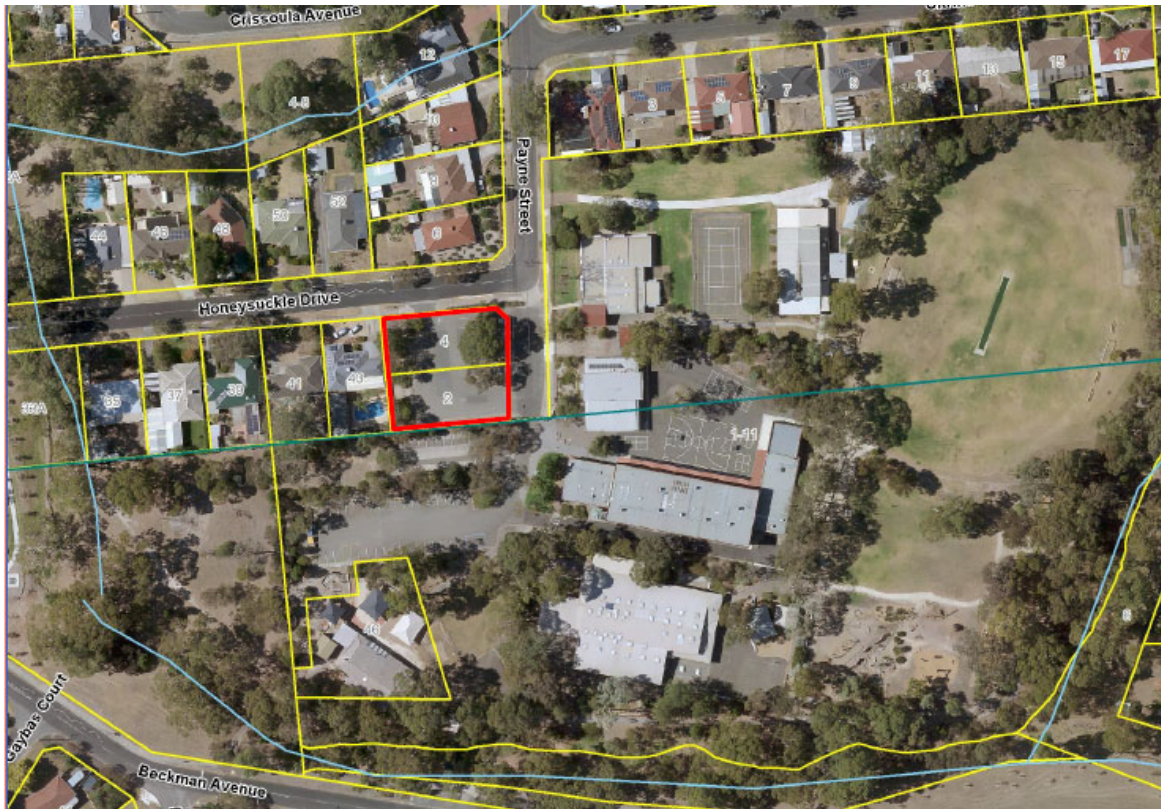
Portion of Modbury Community Learning Centre – U3A adjacent Modbury Primary School carpark
Allotment 1 in D74899 Certificate of Title Volume 6018 Folio 721



Portion of Vine Reserve known as Surrey Downs Primary School carpark
Allotment 82 in D6779 Certificate of Title Volume 5110 Folio 972



Portions of Payne Street carpark known as Highbury Primary School carpark
Allotment 22 in D5929 Certificate of Title Volume 5574 Folio 779
Allotment 23 in D5929 Certificate of Title Volume 5577 Folio 70



Portions of Wynn Vale Recreation Area known as Wynn Vale Oval carpark
Allotment 742 in D117645 Certificate of Title Volume 6207 Folio 244

