



CITY OF
TEA TREE GULLY
Naturally Better

Tea Tree Gully Township Precinct Plan

November 2021

Acknowledgment of Country

The City of Tea Tree Gully acknowledges the Kurna people as the traditional custodians of the lands and waters in the area now known as the Tea Tree Gully Township.

We recognise and respect their cultural heritage, beliefs and relationship with the land. We acknowledge that they are of continuing importance to the Kurna people living today.

We pay our respect to their Elders past, present and emerging and extend that respect to all Aboriginal peoples today.

Contents

Part A – Introduction	1
Purpose	2
Background	3
Review approach	5
Study area	6
Key features of the Township	8
Planning context	10
Zones and Heritage places	11
Part B – Key directions	12
Direction 1: Protect and enhance the Township’s valued landscapes and open space	13
Direction 2: Strengthen the Township’s sense of place and identity	15
Direction 3: Create a Township that is safe and easy to navigate	17
Direction 4: Further the Township as a place where people meet and explore	19
Part C – Precinct plans	21
Precinct 1: West End/Commercial and business	23
Precinct 2: Central/Community and commemorative	24
Precinct 3: East End/Cultural and tourism	25
Vegetation	26
Movement	27
North East Road streetscape upgrade	28
Part D – Implementation plan	29

Part A – Introduction

Part A provides a summary of the process undertaken in developing and reviewing the Tea Tree Gully Township Precinct Plan. It explains the purpose of the Plan and provides a snapshot of the Township's key features and context.

Purpose

The Tea Tree Gully Township is recognised as an area of historic significance with the potential to offer local cultural and economic opportunities whilst preserving and enhancing its character.

The 2021 updated Tea Tree Gully Township Precinct Plan sets out four key directions and highlights projects and initiatives that each work towards achieving the Township's potential.

The Precinct Plan is used to assist Council in prioritising and delivering these projects and initiatives in a coordinated manner, and forms the basis to explore opportunities and partnerships with external stakeholders, such as state government agencies, community groups, private individuals, government agencies and the business sector, who also play a pivotal role in the future of the Township.

Background

The Tea Tree Gully Township Precinct Plan was first developed in 2012; creating a shared vision and a plan to prioritise investment over a timeframe of 15 years.

To help shape the Precinct Plan, an extensive community engagement process was undertaken. First, feedback was sought from residents, landowners, schools, businesses and government agencies, MPs, and community, sporting and faith groups located in and around the Township on the vision for the Township and what they'd like to see happen in the area. The feedback was used to develop ideas for the Township under five themes:

1. Heritage and character
2. Things to do and see
3. Environment, parks and open space
4. Business and tourism
5. Walking, cycling and driving.

Next, feedback was sought on the direction and priority of the concepts and ideas for the Township. The feedback was used to refine the Tea Tree Gully Township Precinct Plan and the accompanying implementation plan to be rolled out over the next 15 years.

Since the development of the Precinct Plan, a number of projects have been completed, including:

- **Anstey Hill gateway and entrance upgrade**
Council partnered with state government to upgrade parking, pedestrian access, paving, landscaping, seating and tree planting.
- **Pine Park upgrade**
The retaining wall rebuilt within Pine Park was upgraded.
- **Heritage information signage**
Provided for heritage places that didn't already have signs, which complemented existing signage on Council owned sites and some privately owned sites.
- **Additional community facility**
The former heritage-listed Council Chamber building was developed and opened as a gallery and studio space (Gallery 1855).
- **Tea Tree Gully Community Hall upgrade**
The kitchen and toilets within the hall were upgraded and the outdoor public toilets were replaced.

- **Linear trail**

A pedestrian link was developed between Memorial Drive and Angove Park Drive plus an additional link to Heitmann Court.

- **Street tree planting**

All residential streets within the precinct have been planted with street trees.

- **North East Road pedestrian connections**

Pedestrian movement along North East Road have been improved including a footpath from the Fox and Firkin Pub to Walters Street.

- **Stage 1 Memorial Drive project**

The culvert (under road bridge) was replaced, as well as the road and footpaths from the culvert to Neale Street.

Although the Tea Tree Gully Township Precinct Plan has facilitated many improvements in the Township over the last 9 years, there is still more work to do.

Given the length of time that has passed since the Precinct Plan's inception, it's important to review the Plan to re-prioritise yet-to-be completed projects and initiatives, and to identify any gaps and new opportunities for the Township.



Review approach

In 2021, a review of the Tea Tree Gully Township Precinct Plan was undertaken. The objectives of the review were to:

- Determine the status of the projects and initiatives identified in the Precinct Plan
- Consider any new trends, and changes to economic, social and environmental climates
- Establish stronger links to current council and state strategies
- Identify any gaps and new opportunities
- Deliver a refreshed Tea Tree Gully Township Precinct Plan, and a renewed reporting structure.

Community engagement was undertaken to gather feedback on current priorities and new ideas for the Township. This consultation period ran from 19 March until 19 April 2021.

Local residents, landowners, community groups, schools, government agencies and businesses within the precinct were directly invited to provide feedback. Visitors and the general public were invited to have their say via social media and on-site signage. The feedback was used to consider new

opportunities for inclusion in the Precinct Plan.

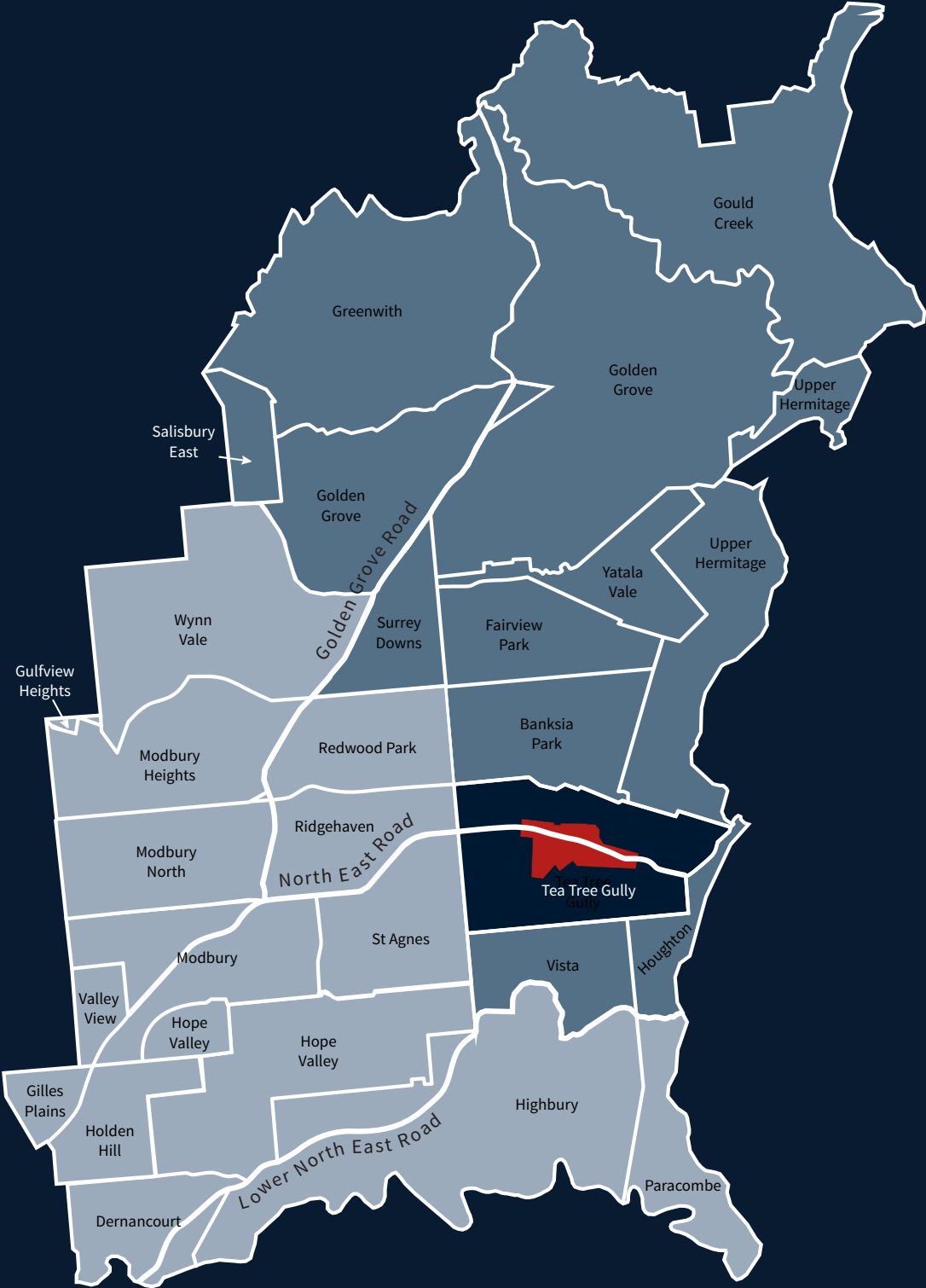
The review also involved undertaking a targeted traffic and parking study to investigate the existing traffic and pedestrian environment within the Township, particularly the intersection of North East Road, Haines Road and Perseverance Road, with a view to formulating infrastructure strategies that improve pedestrian safety and ease parking concerns.

The outcome of the review process has culminated in this 2021 update of the Tea Tree Gully Township Precinct Plan, which includes a revised implementation plan to prioritise investment over the next 10 years.

The Precinct Plan now identifies four key directions that work to fulfil the Township's potential, and are iterations of the five themes in the original Precinct Plan. These directions provide firmer direction on the purpose of each theme and greater alignment with priorities highlighted during community engagement. These key directions are listed below.

Key directions in updated plan	Aligns with these themes of previous plan
1. Protect and enhance the Township's valued landscapes and open space	Environment, Parks and Open Space
2. Strengthen the Township's sense of place and identity	Heritage and character
3. Create a Township that is safe and easy to navigate	Walking, cycling and driving
4. Further the Township as a place where people meet and explore	More things to see and do Business and tourism

Study area





The Tea Tree Gully Township is located in the north-eastern suburbs of Adelaide, some 19 kilometres from the CBD, and is one of the main gateways to the Adelaide Hills.

Once a swampy gully densely covered by native tea trees, the traditional custodians of the Tea Tree Gully district are the Kaurna people. In the early years of European settlement, the area was popular with squatters on route between Adelaide and the Hills, due to its fresh water supply. Permanent settlement occurred in 1839, and the township was originally called Steventon,

after John Stevens, a prominent landholder at the time. The name later changed to Tea Tree Gully after the 1900s.

Today, the Township is a predominantly residential area with a mix of commercial, retail and community land uses focused along North East Road and around Memorial Oval. The historic character of this area is largely intact and comprises significant historic buildings and commemorative landmarks. Landscaped parks and gardens are strong visual features amid the backdrop of Anstey Hill Recreation Park.

Key features of the Township



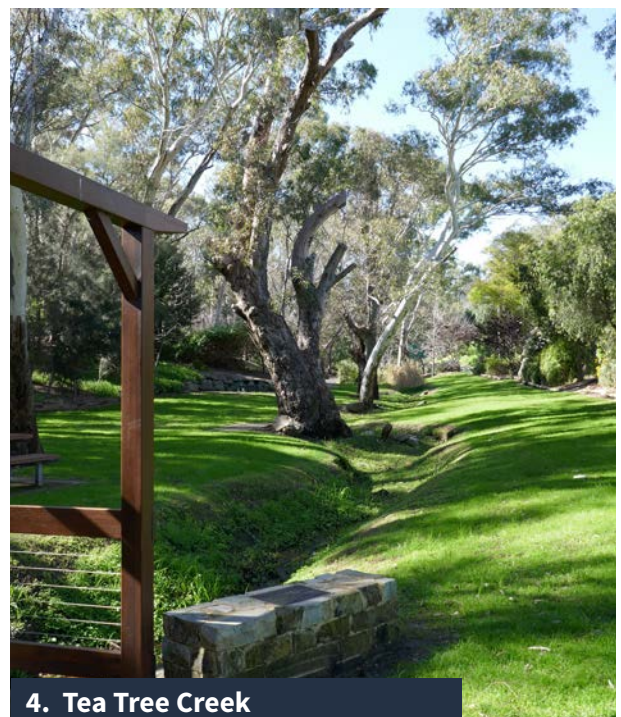
1. Heritage places



2. Parks



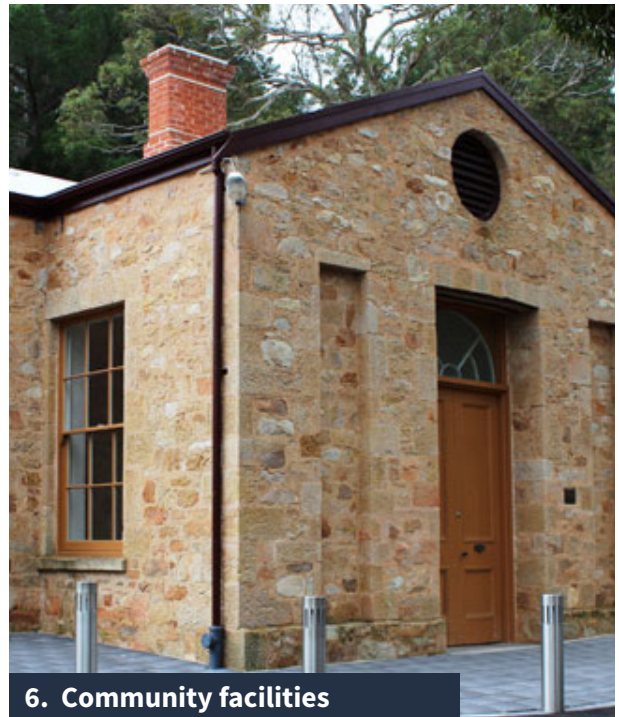
3. Anstey Hill Recreation Park



4. Tea Tree Creek



5. Residential dwellings



6. Community facilities



7. Commercial land uses



8. North East Road

Planning context

Council's vision in the City of Tea Tree Gully **Strategic Plan 2025** is for "a thriving community with a quality lifestyle that values its people and natural environment."

The Tea Tree Gully Township Precinct Plan supports key priorities outlined in the Strategic Plan, including:

- Environmentally valuable places and sites that are flourishing and well cared for
- Streets, paths, open spaces and parks are appealing, safe and accessible
- Opportunities exist to express and experience art and culture
- Neighbourhoods are easy to move around and are well connected with pedestrian and cycle paths that offer an alternative to cars
- Our tree canopy is increasing
- Buildings and places are energy efficient, well designed and display a uniqueness of character and identity
- Planning considers current and future community needs
- A local economy that is resilient and thrives, where businesses are supported to grow and prosper, provide local jobs and sustain our community and visitors and utilise technology to improve the livability of our city
- Major strategic decisions are made after considering the views of the community.

The Precinct Plan also supports priorities in:

- Disability Access and Inclusion Plan 2020-2024
- Regional Public Health Plan 2021-2026
- Economic Development Framework 2020-2023
- Asset Management Plans 2020-2030.

Planning and Design Code

The zones in the Planning and Design Code that apply to the study area are:

Township Zone – A zone that encourages a mix of land uses and facilities that contributes to and enhances streetscapes and the settlement pattern.

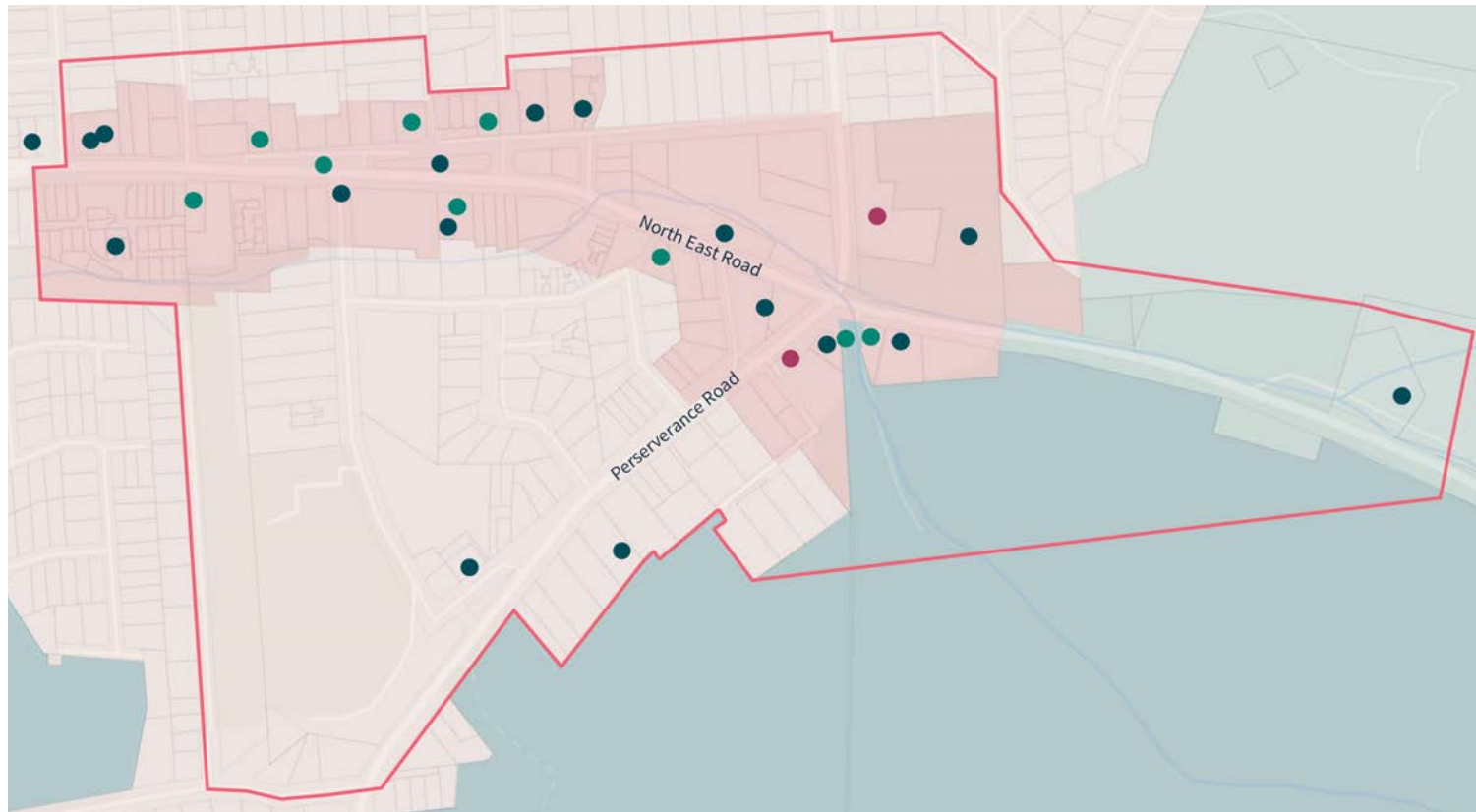
General Neighbourhood Zone – A zone that supports a range of housing within easy reach of services and facilities.

Conservation Zone – A zone that conserves and enhances the natural environment and provides for low-impact recreational and tourism development.

Hills Face Zone – A zone that maintains the western slopes of the Mt Lofty Ranges as an important natural asset by limiting development.

The Township Zone is also subject to the **Historic Area Overlay**, which aims to reinforce historic themes and characteristics through conservation and contextually responsive development, design and adaptive reuse.

Zones and Heritage Places



- Township Zone/Heritage Area
- General Neighbourhood Zone
- Conservation Zone
- Hills Face Zone
- State Heritage Places
- Local Heritage Places
- Representative Buildings

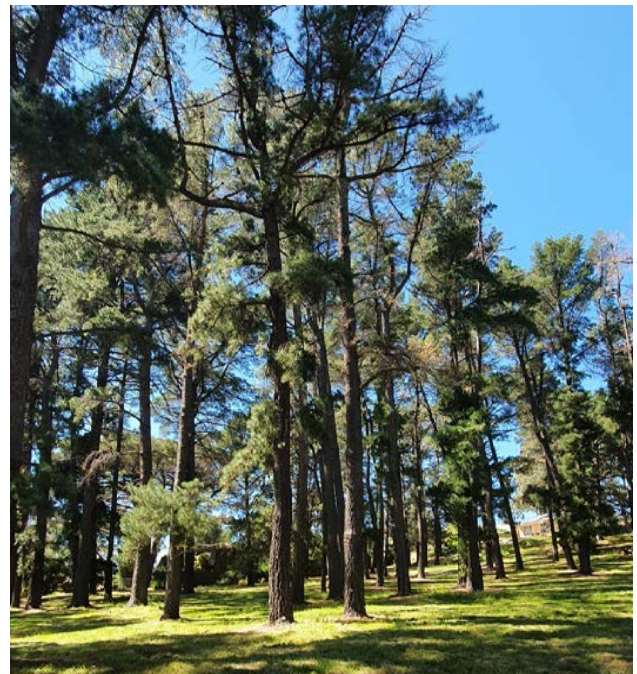


Part B – Key directions

Part B outlines the four key directions that underpin the Precinct Plan's aim to unlock the Township's potential. They provide a detailed focus for future planning and investment in the Township, and are followed by actions and initiatives that work to achieve these four key directions.

Direction 1: Protect and enhance the Township's valued landscapes and open space

The need to protect and enhance the Township's parks and open space was highlighted as the most important priority moving forward by community engagement respondents. The COVID-19 pandemic has seen a renewed appreciation of quality parks and outdoor green spaces, which are not only ecologically important, but are crucial in supporting the physical and mental health and wellbeing of individuals. The biggest indicator of this in the Township is the increased popularity of Anstey Hill Recreation Park. Opportunities exist to further enhance other parks and open spaces in the Township, to increase the tree canopy for comfort and amenity, and to continue to strive for best practice sustainable operations.



“I would like to see our urban environment abundant with appropriate trees. A successful outcome would be admired for generations, and create a quality lifestyle.”

Community feedback

“The parks and open spaces are looking good, but more seating, picnic areas, footpaths and playgrounds are required for families, seniors and kids to enjoy.”

Community feedback

Actions and initiatives

- 1.1 Establish and maintain more street trees on local roads to provide streetscape character, links to wildlife corridors and shade for pedestrians and parked cars.
- 1.2 Consider boulevard street tree planting along North East Road that responds to the scale of the road and provides shade and legibility to the public realm.
- 1.3 Ensure that landscaping forming part of Stage 2 of the Memorial Drive upgrade supports the Avenue of Honour, and is developed in collaboration with the RSL, TTG branch, along with specialist heritage advisors and Council’s internal biodiversity and arboriculture specialists.
- 1.4 Revegetate parts of Tea Tree Creek owned by Council and continue weed management to restore the creek back to its natural state.
- 1.5 Develop a tree management plan for the Pine Plantation to make sure it remains established and healthy, recognising the pines have a limited lifespan.
- 1.6 Improve the visual amenity of the formalised area of Pine Park by including a landscape buffer to North East Road.
- 1.7 Establish a biodiversity link adjacent Heitmann Court, with infill planting and possible interpretive signage.
- 1.8 Integrate Water Sensitive Urban Design techniques in the future design and management of public realm spaces.
- 1.9 Consider the use of LED luminaires throughout the Township to realise benefits including minimising light-spill and halving energy use, electricity costs and carbon emissions.
- 1.10 Continue to undertake Place Amenity Assessments of the public realm to make sure that a high level of amenity is maintained.

Direction 2: Strengthen the Township's sense of place and identity

Community members continue to display pride in the large number of heritage places in the area, the connection they provide to the bygone days, and the unique character and attractiveness of the Township.

There is also a growing awareness and interest in First Nations people and culture, and community feedback suggests that more should be done to recognise the Township's Aboriginal heritage.

Feedback also suggests that achieving a consistent heritage-style public realm is essential, as well as improving the amenity of the Township's western end. A landscape style-guide will be the first priority in building a cohesive public realm.



“Just need to keep focus on the unique historical significance of this wonderful precinct.”

Community feedback

“The North East Road streetscape to the west of the Township lacks character and undermines the excellent work done within the precinct.”

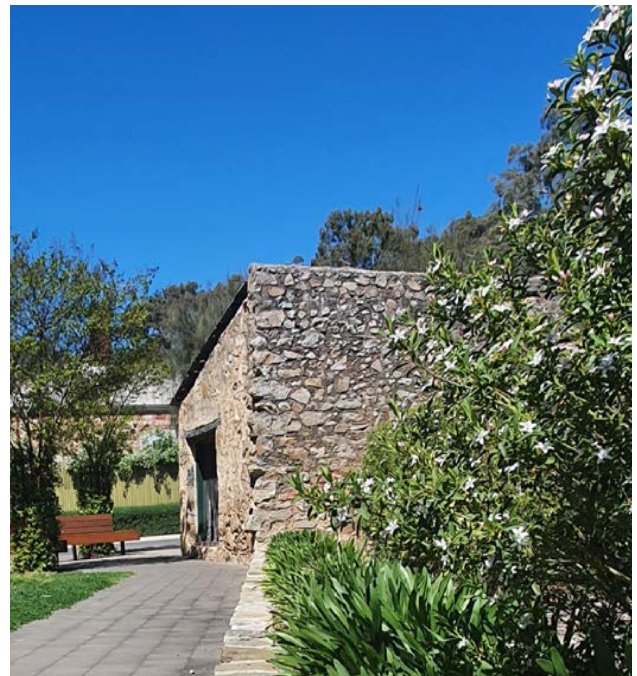
Community feedback

Actions and initiatives

- | | |
|---|--|
| <p>2.1 Develop a landscape style-guide to create a cohesive public realm throughout the Township using selected planting species and a standardised materials palette for all future improvement works, including appropriate maintenance regimes to ensure desired outcomes are met.</p> <p>2.2 Improve the appearance of township entrances and approaches by developing gateway treatments that reflect the local sense of place and heritage.</p> <p>2.3 Seek funding from the Power Line Environment Committee (PLEC) to underground overhead wires along North East Road to improve streetscape appearance and allow planting for larger trees.</p> <p>2.4 Engage with Kurna Yerta Aboriginal Corporation to establish ways of recognising the Township’s Aboriginal heritage, such as investigating dual-lingual signage and an Aboriginal History interpretive trail within the Township.</p> | <p>2.5 Review heritage interpretive signage within the Township to make sure information is accurate and easy to understand, and is presented in a way that reflects the historic character of the Township.</p> <p>2.6 Improve the appearance of the retaining wall along the North East Road frontage of Haines Park.</p> <p>2.7 Advocate and support the continued protection of State and Local Heritage Places and Representative Buildings in the Planning and Design Code.</p> <p>2.8 Continue to maintain and enhance heritage-listed places owned by Council in line with Council’s 10 Point Heritage Plans.</p> <p>2.9 Continue to provide free heritage advice and grants to owners of heritage buildings to assist with re-development and conservation works.</p> <p>2.10 Reduce unnecessary visual clutter in the public realm, such as signage.</p> |
|---|--|

Direction 3: Create a Township that is safe and easy to navigate

North East Road offers easy access to the Township by car and gives some exposure to the area's businesses and attractions. However, it also impacts people's enjoyment once they arrive in the precinct, and reduces the comfort and safety of pedestrians. The ability to safely cross North East Road was the most common issue raised during community engagement. The popularity of Anstey Hill Recreation Park has also increased parking pressures, and is a key concern as the Township is discovered by more visitors in the future. A traffic and parking study of the Township commissioned as part of the Precinct Plan review identifies strategies that can be further investigated, including opportunities for enhancing walking and cycling options.



“I have lived here over thirty years and love seeing the new updates and family access for prams, wheelchairs etc.”

Community feedback

“Make it easier to cross North East Road; a 40 or 50 kph speed limit in the area may work. Improved lighting over footpaths would be good too.”

Community feedback

Actions and initiatives

- 3.1 Complete Stage 2 of the Memorial Drive upgrade between Neale Street and Tea Tree Gully Memorial Oval, including roadway, traffic, stormwater, footpath and landscaping improvements.
- 3.2 Work with the Department of Infrastructure and Transport (DIT) to improve connectivity and safety for pedestrians crossing North East Road, including advocating for reduced traffic speeds through the Township.
- 3.3 Further investigate strategies to ease car parking pressures in the Township. Investigations to include:
 - (a) Formalising street parking on Haines Road opposite the CFS station
 - (b) Advocating for more parking within Anstey Hill Recreation Park
 - (c) Providing accessible parking spaces adjacent the Tea Tree Gully Heritage Museum and in the Tea Tree Gully Sports Area
 - (d) Making car park surface improvements in the Tea Tree Gully Sports Area
 - (d) Reviewing car parking in and around the Tea Tree Gully Institute site on Walters Street
 - (e) Opportunities to create public/private partnerships to deliver additional car parking areas.
- 3.4 Improve lighting in lower lit areas as part of the North East Road streetscape upgrade to enhance safety and street activation.
- 3.5 Make it easier for people to find their way through the Township by renewing signage and wayfinding devices.
- 3.6 Undertake a footpath audit within the Township to prioritise upgrades in accordance with the Precinct's Landscape Style Guide.
- 3.7 Work with DIT to address vehicle congestion at the intersection of North East, Haines and Perseverance Roads, noting that any solution at this intersection will need to consider the impacts of traffic on the wider local network (for example, Walters Street).
- 3.8 Retain and improve on the facilities provided for cyclists in the Township, and consider their connectivity to the adjacent network
- 3.9 Ensure public realm improvements contribute to providing equitable access for people of all abilities and consider Crime Prevention Through Environmental Design (CPTED) principles.

Direction 4: Further the Township as a place where people meet and explore

The Tea Tree Gully Township is a unique destination in our City, with the potential to offer a range of experiences for residents and visitors – such as recreation, arts and cultural activities, eating out and socialising with family and friends. Currently, it appears that many people visiting the Township stay for only one experience. There is a big opportunity to link and promote experiences to increase visitor engagement. Along with the necessary infrastructure investment, creating public spaces that are interesting and stimulating can encourage people to stay, play and explore the Township, while increasing trade for local business.



“So many people travel to Tea Tree Gully to walk Anstey’s Hill. Let’s use some space to create a café for people to have a coffee after their walk.”

Community feedback

“Make allowances for businesses to be created whilst holding onto the principles of the heritage and character of the area.”

Community feedback

Actions and initiatives

- 4.1 Investigate options to expand and diversify play opportunities in and around the Township, such as advocating for a playscape in Anstey Hill Recreation Park, upgrading the playground in Tea Tree Gully Sports Area, and/or introducing unstructured, nature play opportunities in other spaces.
- 4.2 Investigate opportunities to activate the public realm through the arts to enhance the visitor experience.
- 4.3 Consider the options for replacement of commemorative plaques along the Memorial Drive Avenue of Honour in consultation with the RSL, Tea Tree Gully branch.
- 4.4 Install feature lighting and/or selective up-lighting to bring life, clarity, colour and safety to the Township.
- 4.5 Look at ways to improve the visual presence of the Gallery 1855 building to North East Road and Haines Park.
- 4.6 Work with tourism agencies to promote the Township as a gateway to the Adelaide Hills, and for its heritage, landscape quality and visitor experiences, both within and outside of the City of Tea Tree Gully.
- 4.7 Support planning policies in the Planning and Design Code that allow for a range of community, retail and commercial land uses focused along North East Road that considers the historic themes and characteristics of the Township.
- 4.8 Explore opportunities for cross-promotion of events and programs within the Township linking experiences to enhance visitor engagement.
- 4.9 Support community-led small-scale events.
- 4.10 Continue to promote the optimisation of Council-owned buildings in meeting current and future community needs.
- 4.11 Assist with entrepreneurial skills development and confidence to activate innovative ideas and businesses through the Small Business Advisory Service.

Part C – Precinct plans

Part C spatially presents the actions and initiatives listed under each of the four Key Directions. It takes a closer look at those within three distinct precincts, noting that the spaces between each precinct will benefit from Township-wide actions and initiatives in creating connection and visual cohesion.



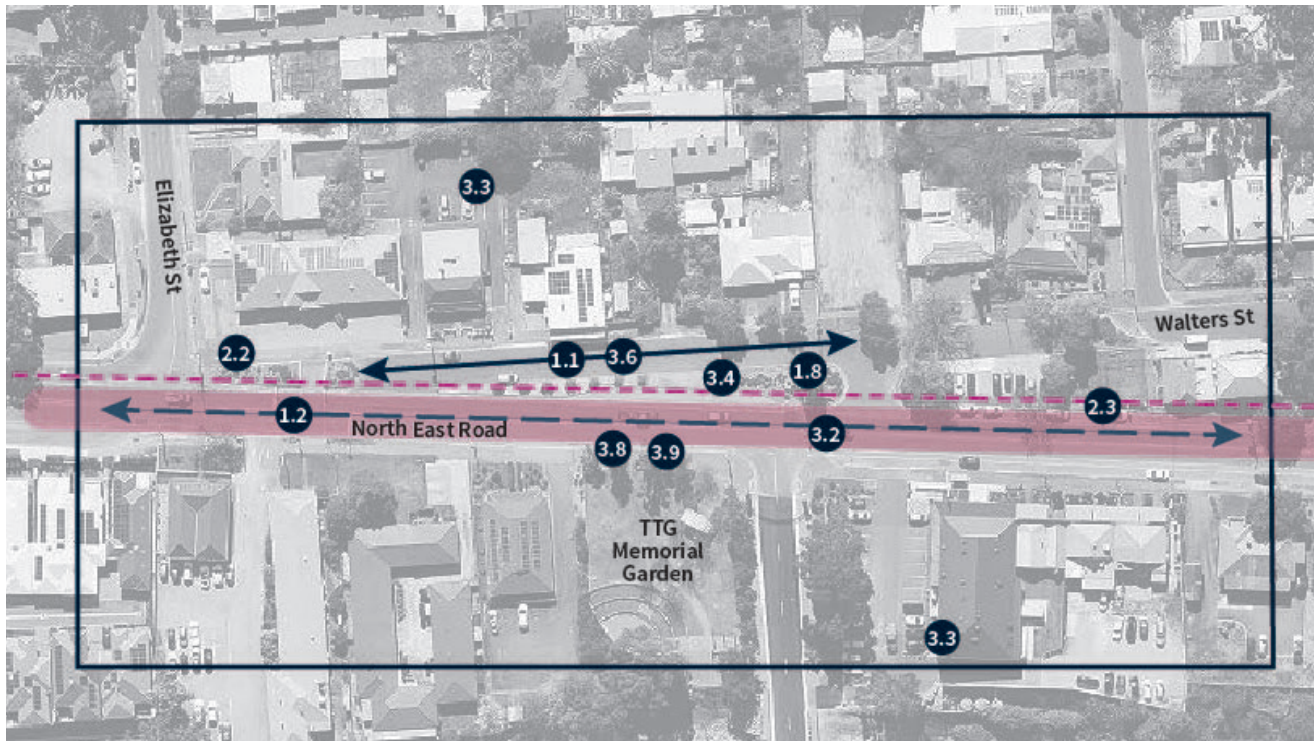
Precincts



- Precinct 1**
West End
Commercial
Business
- Precinct 2**
Community
Commemorative
- Precinct 3**
East End
Cultural
Tourism
- Project study area**

Precinct 1

West End/Commercial/Business



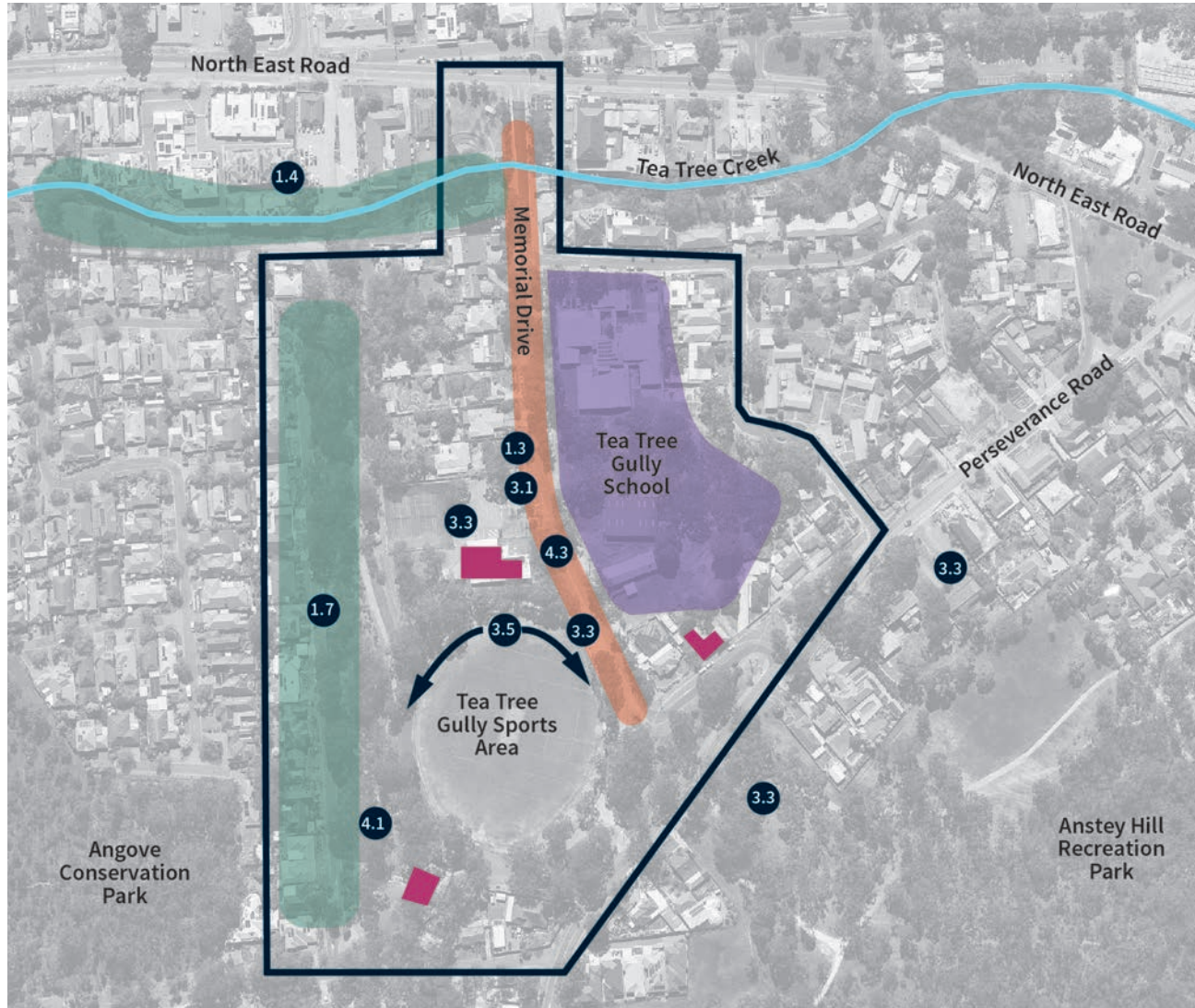
Legend

- Undergrounding power
- North East Road streetscape upgrade (Hancock to Haines Road)
- ↔ Seek to reduce traffic speed

- 1.1** Plant more street trees
- 1.2** Boulevard trees along North East Road
- 1.8** Water sensitive urban design improvements
- 2.2** Possible gateway treatment here or Church Street
- 2.3** Underground overhead wires
- 3.2** Work with DIT to reduce traffic speeds and improve pedestrian safety
- 3.3** Explore options for consolidated rear car parking areas
- 3.4** Improve lighting
- 3.6** Footpath audit
- 3.8** Retain and improve cycle network
- 3.9** Universal design principles to be incorporated

Precinct 2

Community/Commemorative



- 1.3** Landscape to support the Avenue of Honour
- 1.4** Revegetate parts of Tea Tree Creek
- 1.7** Possible biodiversity link
- 3.1** Complete stage 2 of Memorial Drive upgrade
- 3.3** Car park improvements
- 3.5** Wayfinding improvements
- 4.1** Investigate options for renewing playground
- 4.3** Consider alternative commemorative plaques

Precinct 3

East End/Cultural/Tourism



- 1.2 Boulevard planting along North East Road
- 1.5 Tree management plan for the pine plantation
- 1.6 Improve amenity of formal section of Pine Park
- 2.2 Potential gateway treatment location
- 2.4 Possible Aboriginal history interpretive trail
- 2.6 Improve retaining wall appearance
- 3.3 Car parking improvements
- 4.1 Advocate for a playspace in Anstey Hill Recreation Park
- 4.5 Improve presence of Gallery 1855
- 4.9 Support small scale events

Legend

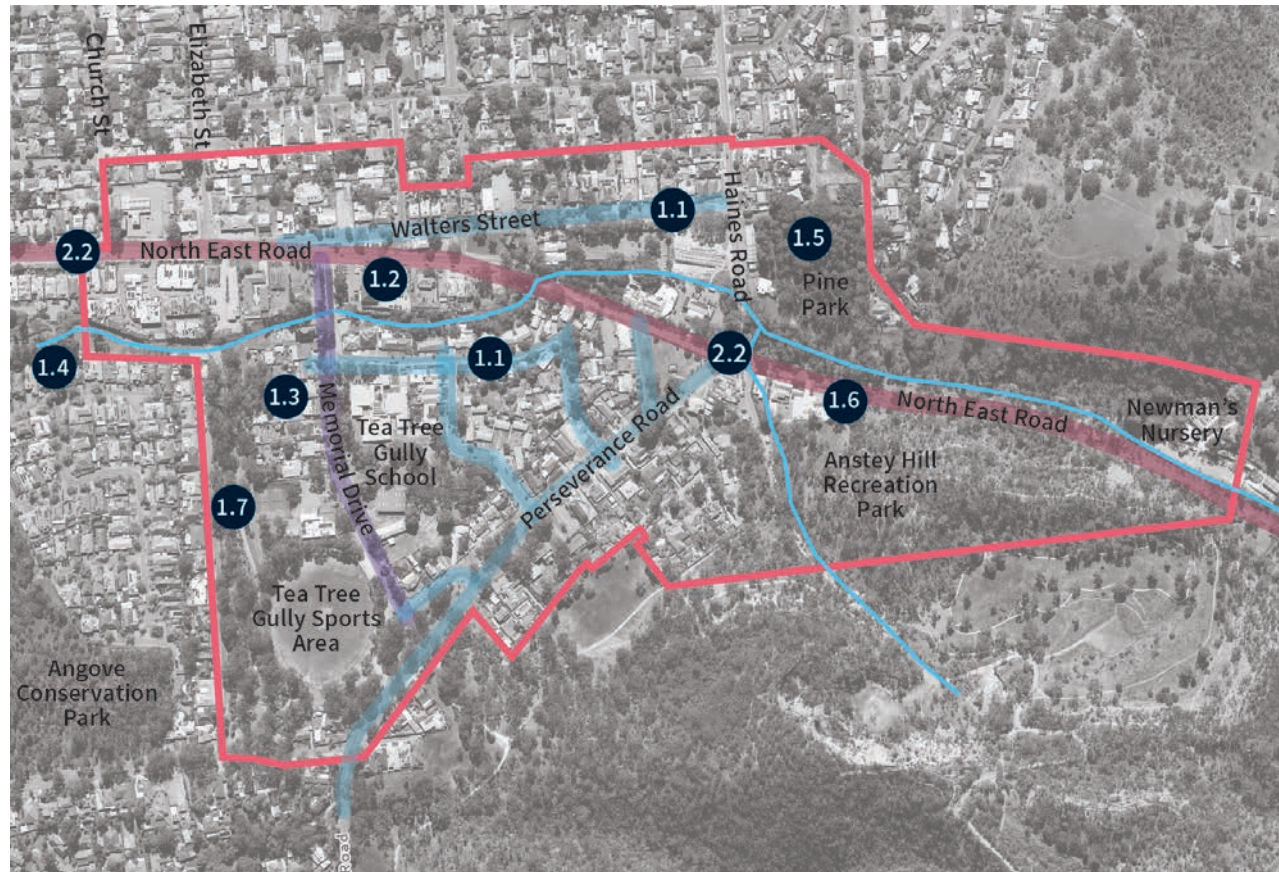
↔ Seek to reduce traffic speed

--- Improve NE Road pedestrian crossing

NE Road streetscape upgrade





Potential for future restaurant/cafe/entertainment development

Vegetation

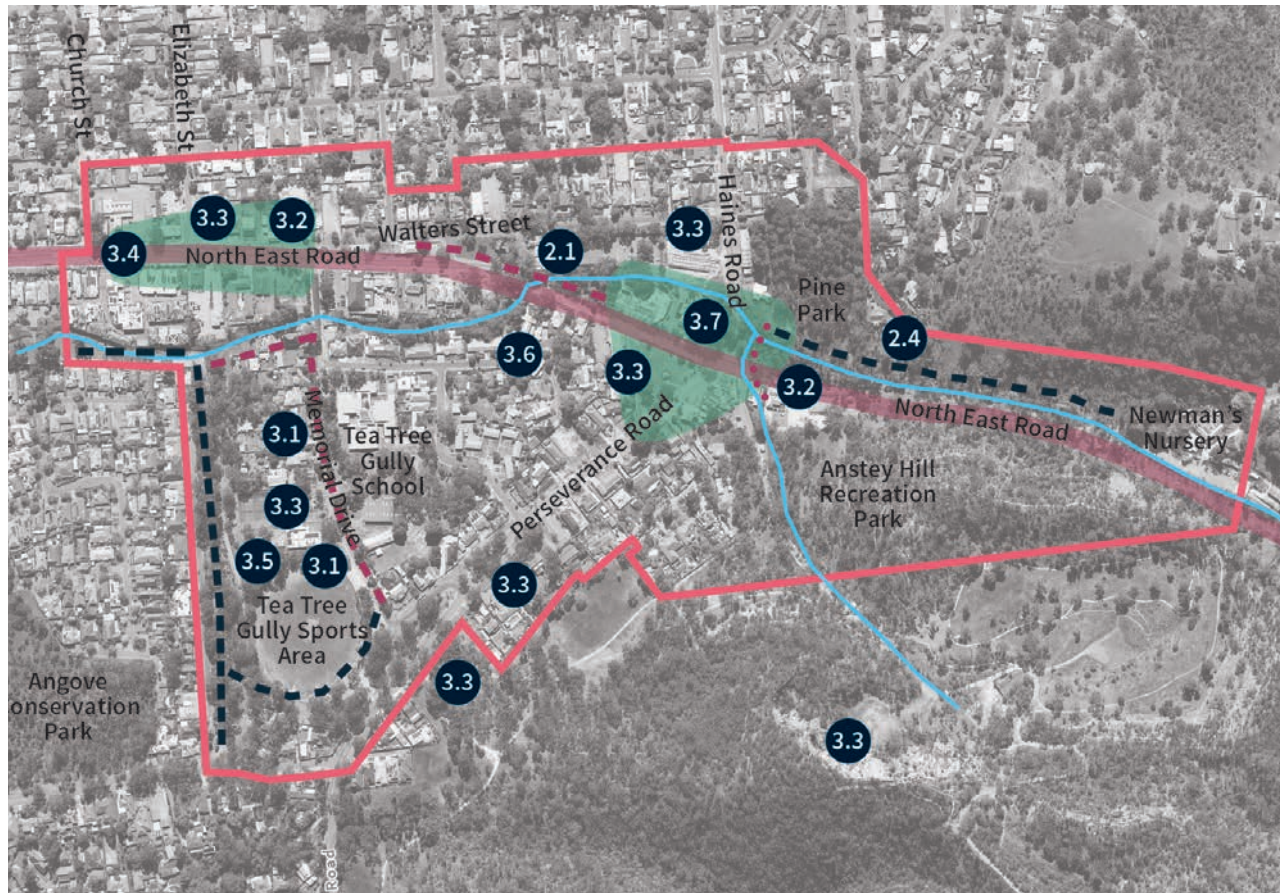


- 1.1** Street tree planting and maintenance
- 1.2** Boulevard street tree planting along North East Road
- 1.3** Avenue of Honour landscaping
- 1.4** Revegetate parts of Tea Tree Creek
- 1.5** Pine plantation management
- 1.6** Landscape visual buffer
- 1.7** Possible biodiversity link
- 2.2** Gateway treatments

Legend

- | | | | |
|---|---------------------------------------|--|-----------------|
|  | Tea Tree Creek |  | North East Road |
|  | Local streets identified for planting |  | Memorial Drive |

Movement



- 2.1** Progressively unify the Township with footpath and furniture treatments (precinct wide)
- 2.4** Possible Aboriginal Interpretive Trail
- 3.1** Improve pedestrian connection along Memorial Drive
- 3.2** Work with DIT to improve pedestrian safety and amenity
- 3.3** Parking improvements and opportunities
- 3.4** Improve lighting as part of NE Road streetscape upgrade
- 3.5** Improved wayfinding
- 3.6** Footpath audit (precinct wide)
- 3.7** Work with DIT to ease traffic congestion

Legend

- ■ ■ Existing links
- ● ● Future enhanced links
- North East Road Streetscape Upgrade
- Pedestrian focus areas

North East Road Streetscape Concept



Note: Concept only, subject to detailed design. Specific materials, treatments, trees and plant species will be determined during creation of the Township Landscape Style-Guide. Any traffic calming, road treatments and pedestrian crossings will be subject to Department of Infrastructure and Transport consent.

Part D – Implementation plan

Part D outlines the approach to delivery and the Implementation Plan, which links each proposed action and initiative to objectives in Council's Strategic Plan. Indicative costs, timeframes and potential partnerships and funding opportunities are also provided where possible.



Approach to delivery

The Tea Tree Gully Township Precinct Plan is a long-term document that guides Council decision-making and prioritisation in the coming years. The key directions provide the framework for the Precinct Plan, whilst the actions and initiatives aim to achieve these outcomes. Every effort has been made to ensure that the proposed actions and initiatives are practical and achievable, however the strategic nature of this plan means that the path to implementation requires flexibility, as responses will depend on the availability of resources and any changes in priorities over time.

To implement the Precinct Plan, it will be necessary to:

- Reflect actions and initiatives as projects in the annual business planning process
- Allocate people resources to guide or undertake the specific projects
- Investigate opportunities for grant funding and partnerships.

Many actions and initiatives in this Precinct Plan are high-level and simply act as a catalyst for further investigation or detailed design. Others can be actioned via Council's capital works program, while some will require advocacy and engagement with external agencies.

The indicative timeframes in the Implementation Plan are:

- Short term – within five years
- Medium term – within 10 years
- Ongoing – for the life of the plan.

“Regular communication to the residents within the area is important, to keep us involved with the developments and plans within our area.”

Community feedback

Ref	Action/Initiative	Timing	Partnerships	Estimated 2021 cost (if known)	Potential external funding sources	Links with Strategic Plan 2025
Direction 1: Protect and enhance the Township's valued landscapes and open space						
1.1	Establish and maintain more street trees on local roads	Short/ongoing		\$60,000	Green Adelaide	2.1, 2.6, 4.1
1.2	Consider boulevard street tree planting along North East Road streetscape	Short	Dept of Infrastructure and Transport	\$150,000	Green Adelaide	2.1, 2.6, 4.1
1.3	Ensure landscaping on Memorial Drive supports the Avenue of Honour	Short	RSL-TTG Branch	\$165,000		1.1
1.4	Revegetate parts of the creek and continue weed management	Short/ongoing		\$60,000	Green Adelaide	2.1, 2.2
1.5	Develop a tree management plan for the pine plantation	Short		\$10,000		2.1, 2.6, 4.1
1.6	Improve the visual amenity of the formalised area of Pine Park	Medium				1.1, 2.1, 4.1
1.7	Establish a biodiversity link adjacent Heitmann Court	Medium		\$20,000	Green Adelaide	2.1, 2.3, 2.6
1.8	Integrate Waste Sensitive Urban Design techniques in public realm spaces	Ongoing			Green Adelaide	2.6, 2.5
1.9	Consider the use of LED luminaries throughout the Township	Ongoing	SA Power Networks		Smart Cities and Suburbs Program	2.6, 2.5
1.10	Continue to undertake Place Amenity Assessments of the public realm	Ongoing				1.1, 3.1, 4.1

Ref	Action/Initiative	Timing	Partnerships	Estimated 2021 cost (if known)	Potential external funding sources	Links with Strategic Plan 2025
Direction 2: Strengthen the Township's sense of place and identity						
2.1	Develop a landscape style guide to create a cohesive public realm	Short				1.1, 2.1, 2.4, 3.3, 4.1, 4.6, 5.3
2.2	Developing gateway treatments at Township entrances	Short	Dept of Infrastructure and Transport		Places for People Grant Program	1.1, 4.1
2.3	Seek funding from the Power Line Environment Committee to underground power lines along North East Road	Short	SA Power Networks Department of Infrastructure and Transport	\$1,600,000	Power Line Environment Committee	1.1, 4.1, 2.6
2.4	Engage with Kurna to establish was of recognising the Township's Aboriginal heritage	Short	Kurna Yerta Aboriginal Corp, Dept of Premier and Cabinet			1.1, 1.5, 4.2
2.5	Review heritage interpretive signage within the Township	Short	National Trust SA History SA			1.1
2.6	Improve the appearance of the retaining wall along the North East Road frontage of Haines Park	Short				4.1
2.7	Support planning policies for the continued protection of heritage places	Ongoing	Planning and Land Use Services		Places for People Grant Program	3.3, 4.4, 4.5
2.8	Continue to maintain and enhance heritage places owned by Council	Ongoing				1.1, 4.4, 4.6
2.9	Continue to provide free heritage advice and grants	Ongoing			Heritage Grnts	1.1, 4.4
2.10	Reduce unnecessary visual clutter in the public realm	Ongoing				4.1

Ref	Action/Initiative	Timing	Partnerships	Estimated 2021 cost (if known)	Potential external funding sources	Links with Strategic Plan 2025
Direction 3: Create a Township that is safe and easy to navigate						
3.1	Complete Stage 2 of the Memorial Drive upgrade	Short		\$800,000		4.1, 4.3, 4.6, 5.3
3.2	Work with Department of Infrastructure and Transport (DIT) to improve safety for pedestrians crossing North East Road	Short/ongoing	Dept of Infrastructure and Transport	Up to \$1.2 mil		4.1, 4.3, 5.1
3.3	Further investigate strategies to ease car parking pressures in the Township	Short/ongoing	Dept of Infrastructure and Transport, Dept of Environment and Water, private landowners	Projects ranging from \$70,000 to \$250,000	Department of Environment and Water	4.1, 4.3, 5.1
3.4	Improve lighting in lower lit areas as part of the North East Road streetscape upgrade	Short	SA Power Networks			4.1, 4.3
3.5	Renewing signage and wayfinding devices	Short			Safer Communities Grant Program	4.1, 4.3
3.6	Undertake a footpath audit within the Township	Short				4.1, 4.3, 4.6, 5.3
3.7	Work with DIT to address vehicle congestion at the intersection of North East, Haines and Perseverance Roads	Medium	Dept of Infrastructure and Transport		Department of Infrastructure and Transport	4.1, 4.3, 5.1
3.8	Retain and improve on the facilities provided for cyclists in the Township	Ongoing			State Bicycle Fund	4.3, 5.3
3.9	Consider universal design and CPTED principles in public realm upgrades	Ongoing			Safer Communities Grant Program	4.1, 4.3, 4.6, 5.3

Ref	Action/Initiative	Timing	Partnerships	Estimated 2021 cost (if known)	Potential external funding sources	Links with Strategic Plan 2025
Direction 4: Further the Township as a place where people meet and explore						
4.1	Investigate options to expand and diversify play opportunities	Short	Dept of Environment and Water (DEW)		DEW	1.1, 1.4, 2.1, 4.1, 4.6, 5.1
4.2	Investigate opportunities to activate the public realm through the arts	Short/ongoing	Adelaide Fringe		Arts and Culture Grant Program	3.3, 4.1, 4.2
4.3	Consider commemorative plaques along the Memorial Drive Avenue of Honour	Short	RSL-TTG Branch			1.1, 4.1
4.4	Install feature lighting	Short				3.3, 4.1, 4.2
4.5	Look at ways to improve the presence of the Gallery 1855 building	Short				1.1, 4.2
4.6	Work with tourism agencies to promote the Township	Medium	Regional tourism boards		Heritage Tourism Grant Program	3.3
4.7	Support planning policies that support a range of land uses and consider the historic character	Ongoing	Planning and Land Use Services			3.3, 4.4, 4.5
4.8	Explore opportunities for cross-promotion of events and programs	Ongoing	Local businesses, community groups			3.3, 4.2
4.9	Support community-led small-scale events	Ongoing	Local businesses, community groups			1.2, 1.3, 3.4, 4.2
4.10	Promote the optimisation of Council buildings	Ongoing				1.4, 4.6, 5.4
4.11	Assist businesses through the Small Business Advisory Service	Ongoing	Business advisors			3.3, 3.4



C I T Y O F
TEA TREE GULLY
Naturally Better

571 Montague Road, Modbury 5092
PO Box 571, Modbury 5092
Telephone 8397 7444
cttg.sa.gov.au