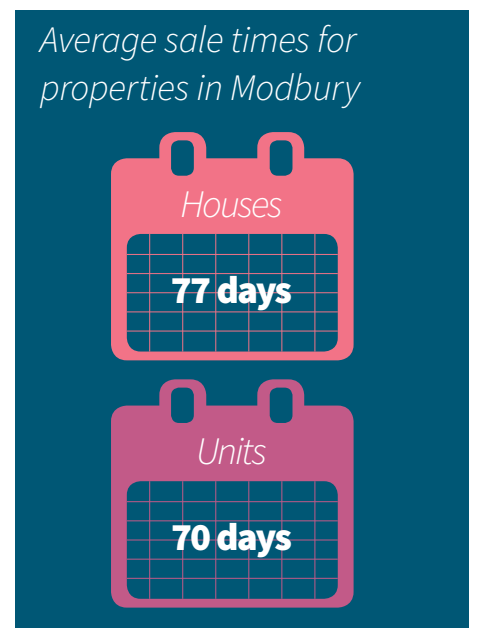
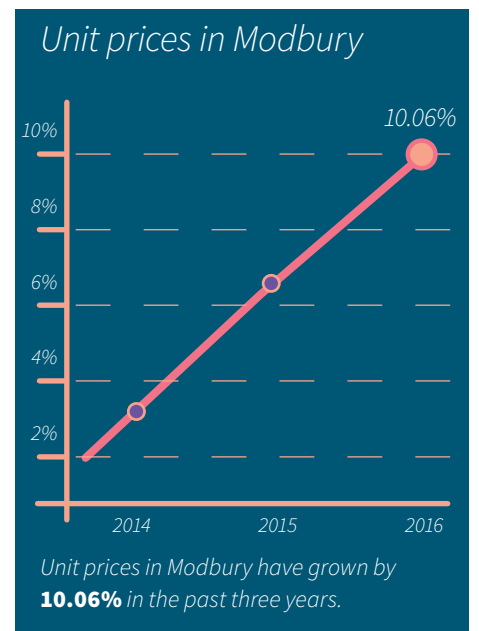
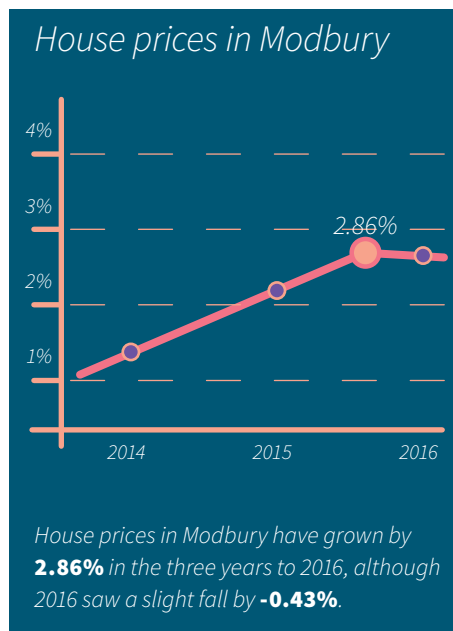


# Developing in Modbury

Modbury



Throughout Modbury and surrounding suburbs, high rental returns and large blocks suitable for subdivision continually attract a wide range of astute investors. The solid rental yields provide favourable conditions for developers to buy established real estate and rent it out in the short-term.

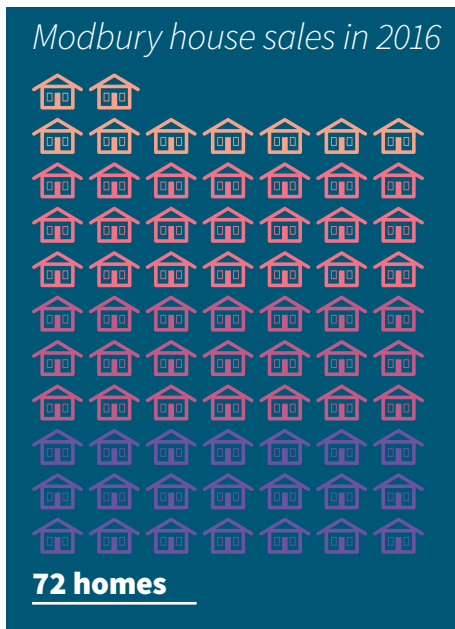


Source: <https://homesales.com.au/location/modbury-sa/>

# Developing in Modbury

*continued*

Modbury



Source: <https://homesales.com.au/location/modbury-sa/>

**Currently, Modbury is seeing widespread, positive transformation. The City of Tea Tree Gully is actively encouraging high-quality, medium-density development to occur across much of the suburb and surrounding areas.**

Favourable opportunities for higher-density developments have also opened up closer to the key retail and entertainment hub at Modbury.

In addition to residential and commercial initiatives, the improved transport links to the CBD have made the area very accessible for residents, with Modbury also listed as a Transit Oriented Development (TOD) site within metropolitan Adelaide's 30-Year Plan.