



CITY OF
TEA TREE GULLY
Naturally Better

LIFT THE RIGHT LID

Lower primary worksheets

cttg.sa.gov.au/waste

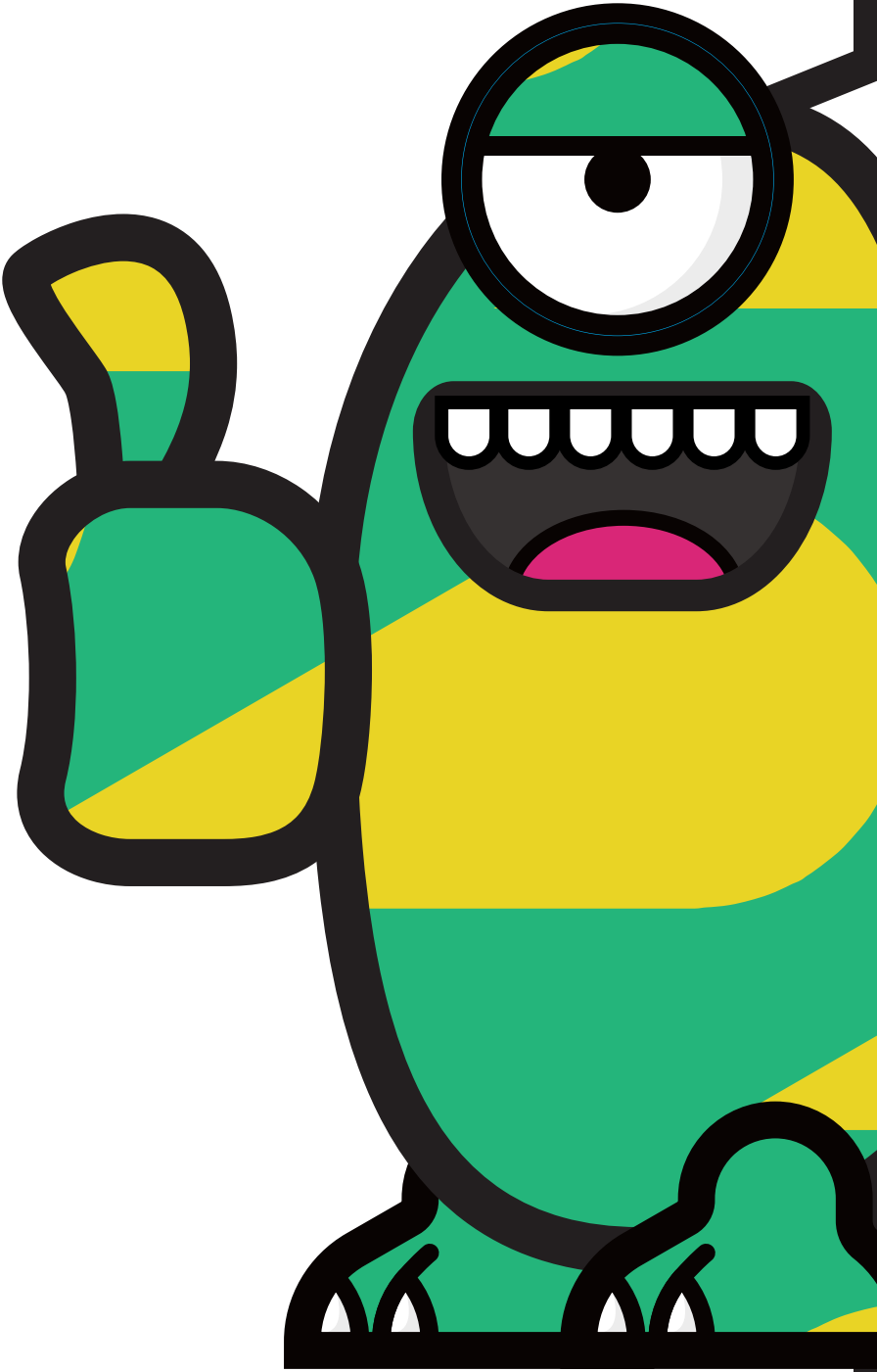


Thumbs up or down?

Read the statements on each card carefully. Which ones do you think are true and which do you think are false? Draw a thumbs up in the box if you think it is true or the thumbs down if you think it is false.

<div><div>Organics can include food scraps and shredded paper.</div><div></div></div>	<div><div>Glass bottles and jars go in the yellow-lid recycling bin.</div><div></div></div>	<div><div>Grass clippings belong in the yellow-lid recycling bin.</div><div></div></div>	<div><div>The yellow-lid recycling bin is for general waste that will go to landfill.</div><div></div></div>
<div><div>Clothes that cannot be donated or reused go in the red-lid general waste bin.</div><div></div></div>	<div><div>The red-lid general waste bin is collected weekly.</div><div></div></div>	<div><div>The green organics bin is collected weekly.</div><div></div></div>	<div><div>Items made of styrofoam belong in the yellow-lid recycling bin.</div><div></div></div>
<div><div>Food scraps are better in the red-lid general waste bin.</div><div></div></div>	<div><div>You can put dirty pizza boxes in the green organics bin.</div><div></div></div>	<div><div>The green organics bin is for general waste.</div><div></div></div>	<div><div>The red-lid general waste bin is for items that will go to landfill.</div><div></div></div>

Name: _____



Ways to reuse it

Choose an item that you throw away a lot and draw it in the box on the page. Now brainstorm ways that you could reuse it. Be as creative as possible.

Draw your item here:

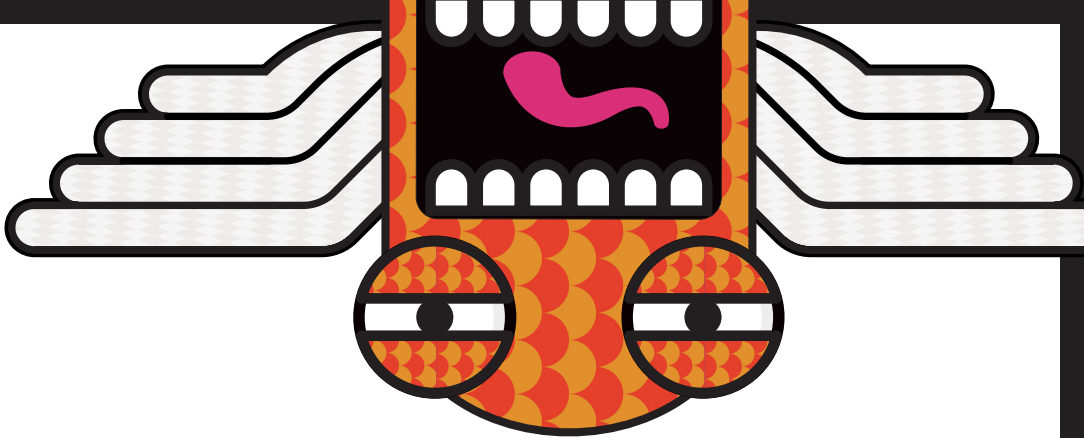
List the ways you could reuse this item here:



Bin bingo

Find a classmate who has or does these things and write their name in the box. You can only use each name once. The first person to fill in their bingo card wins!

Name: _____



Someone with a
refillable drink bottle.

Someone that has a
'nude-food' lunchbox
(wrapper free).

Someone with a
reusable container.

Someone that uses food
scraps for compost.

Someone that recycles.

Someone that
picks up rubbish.

Someone that
reuses scrap paper.

Someone that knows the
colour of each bin lid.

Someone that has a
Mini Muncher kitchen
caddy at home.

Which bin?

Do you know your bin lid colours and what goes in the three different bins? Learn your bin lid colours, then colour the lids of the bins below. Now draw some waste items that you know belong in each.

Name: _____



Red-lid general waste bin

Your red-lid general waste bin is collected **weekly** and is for general household items that cannot be recycled. Everything you put in this bin is sent to landfill.



Yellow-lid recycling bin

Your yellow-lid recycling bin is collected **fortnightly** and is for recyclable household items. Everything you put in this bin can be turned into something new.



Green organics bin

Your green organics bin is collected **fortnightly** and is for organic material. Everything you put in this bin can be turned into high-quality nutrient-rich compost.

KWL chart

Choose an item that you throw away a lot and draw it in the middle of the page. Now brainstorm ways that you could reuse it. Be as creative as possible.

Name: _____

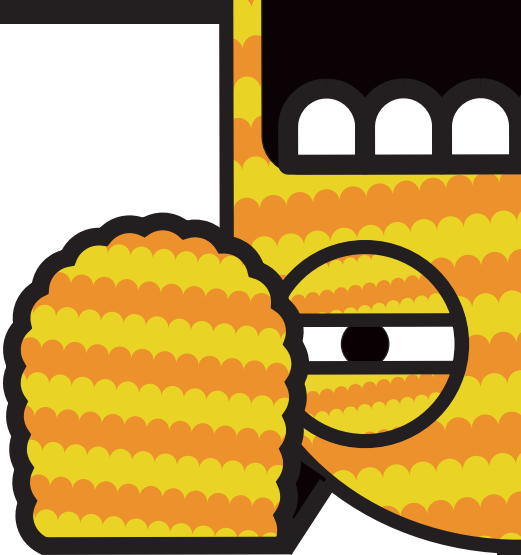
What I KNOW about waste and recycling	What I WANT to know about waste and recycling	What I have LEARNT about waste and recycling

Packaged products

Using supermarket catalogues, cut out items that have packaging and items that are not packaged. Stick them into the correct columns below.

In the ‘Packaging’ column, tick the items that you think the packaging can be recycled.

Name: _____



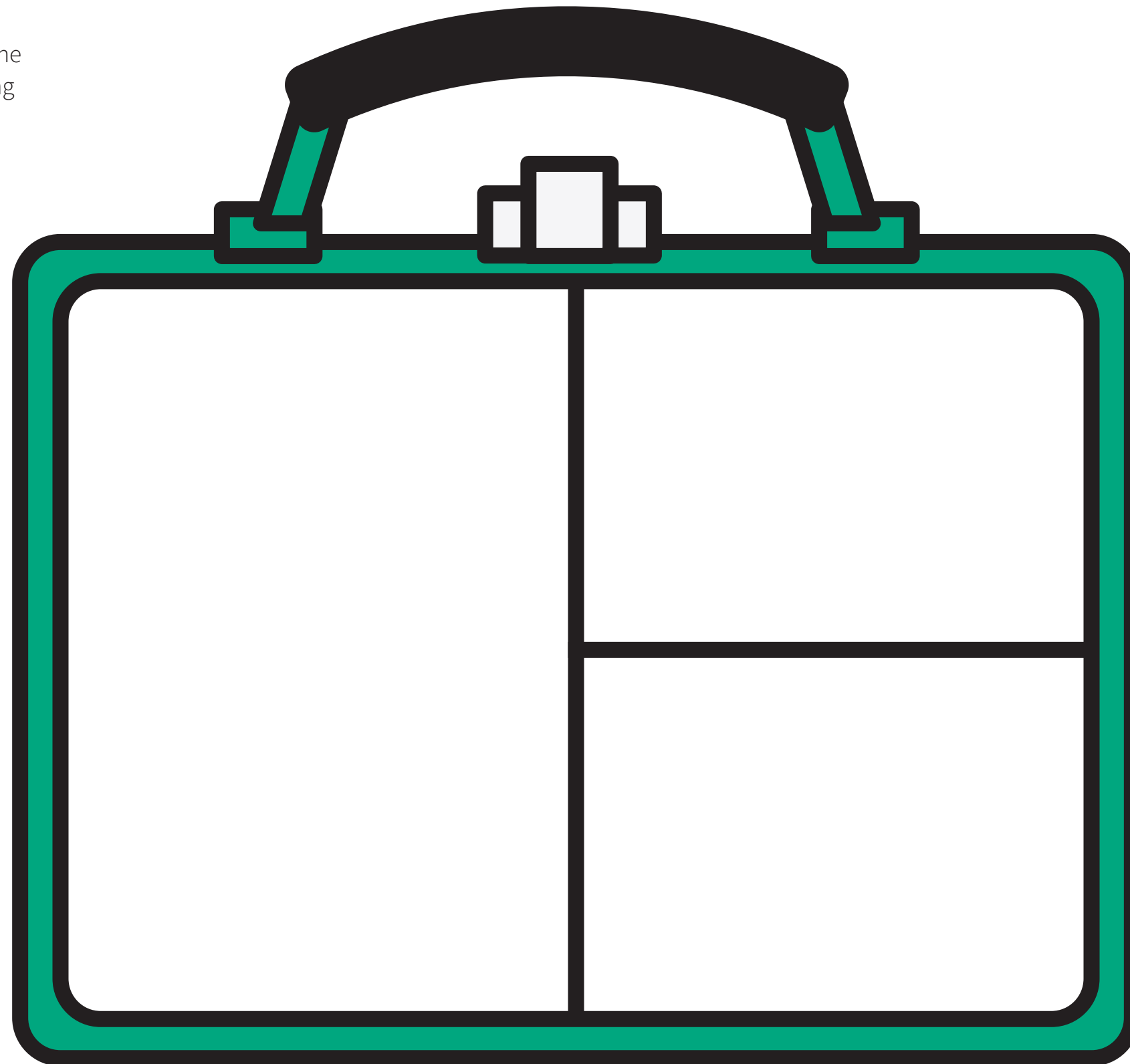
Items that have packaging

Items that are not packaged

My nude lunchbox

Design and draw your own 'nude food' lunchbox. It must include recess, lunch and healthy snacks - and can not include any wrapping or packaging! Think about all the different ways that you could avoid having packaging in your lunchbox.

Name: _____



Name: _____

Every time someone in your house disposes of an item, record the item and which bin they put it in using the columns below. Add up the number of items put in each bin in the 'Total' section.

Red-lid general waste bin	Yellow-lid recycling bin	Green organics bin	Other
Total	Total	Total	Total

I am paper. When you no longer need me, please put me in the yellow-lid recycling bin.

Watch it waste

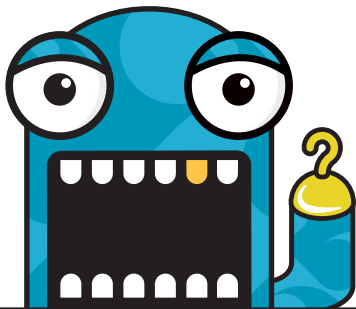
How quickly do foods decompose? What if we change the conditions? Use the table below to record your experiment and see if what you think is correct.

Name: _____

Food	Conditions (Where is it placed)	My hypothesis (How long will it take to decompose)	Actual result (What happend)

Waste words

In the table below are some words that you will encounter as you learn about waste and waste management. For each word find a waste related definition and then write a sentence using the word. There is space for you to include some words of your own.



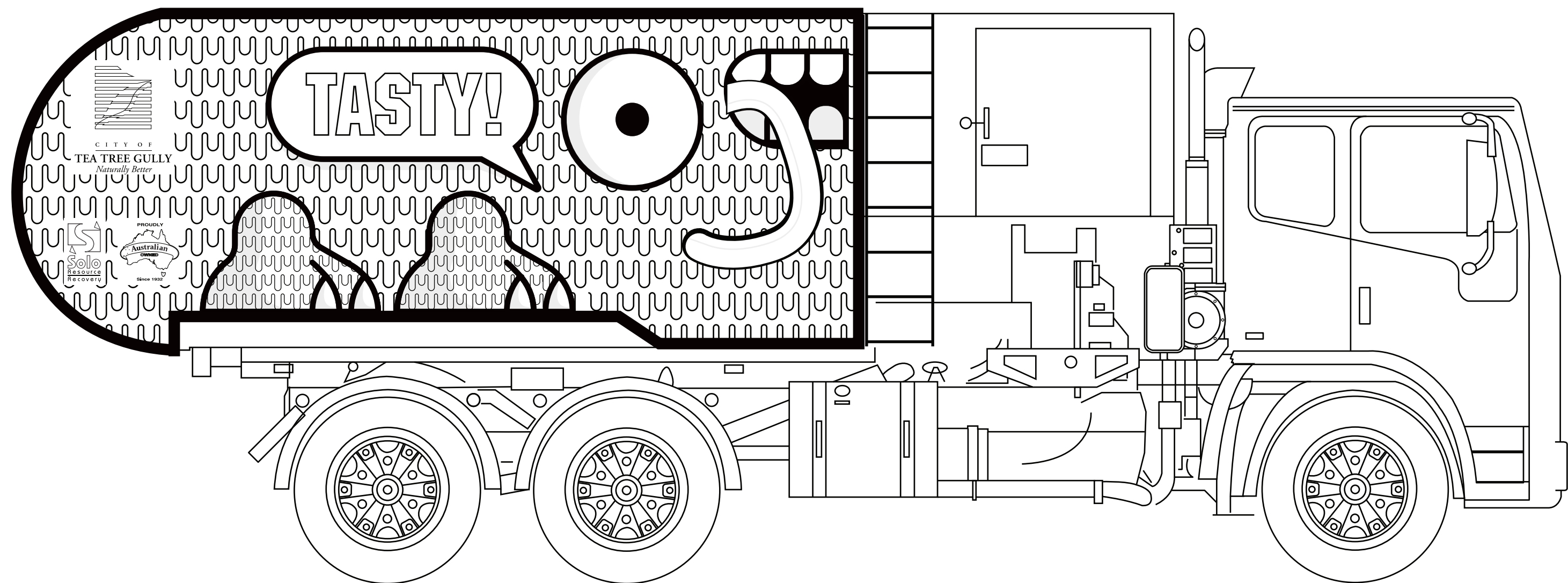
Name: _____

Word	Definition	Use it in a sentence
Waste		
Landfill		
Reduce		
Recycle		
Reuse		

Waste monster

Decorate and colour in the waste monster
garbage truck.

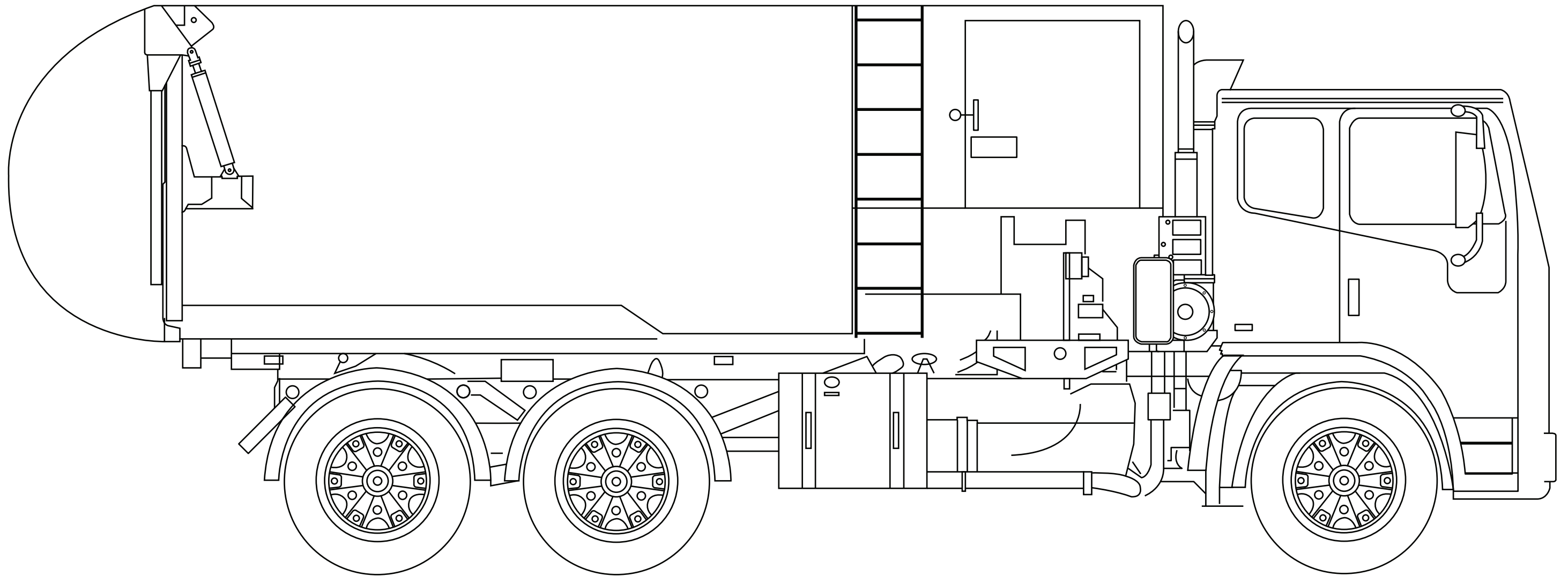
Name: _____



Waste monster

Design your own waste monster garbage truck,
give it a name and colour it in.

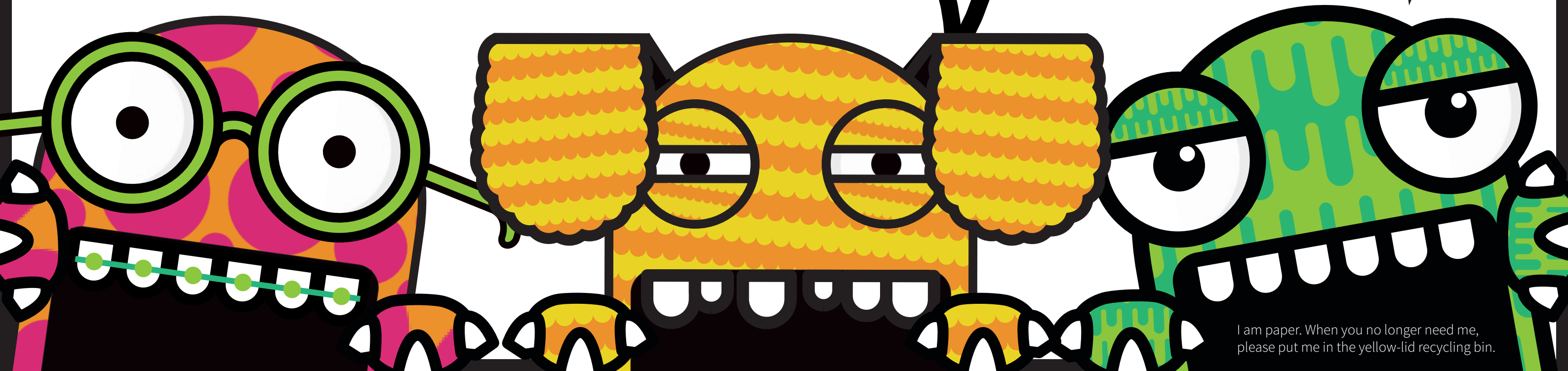
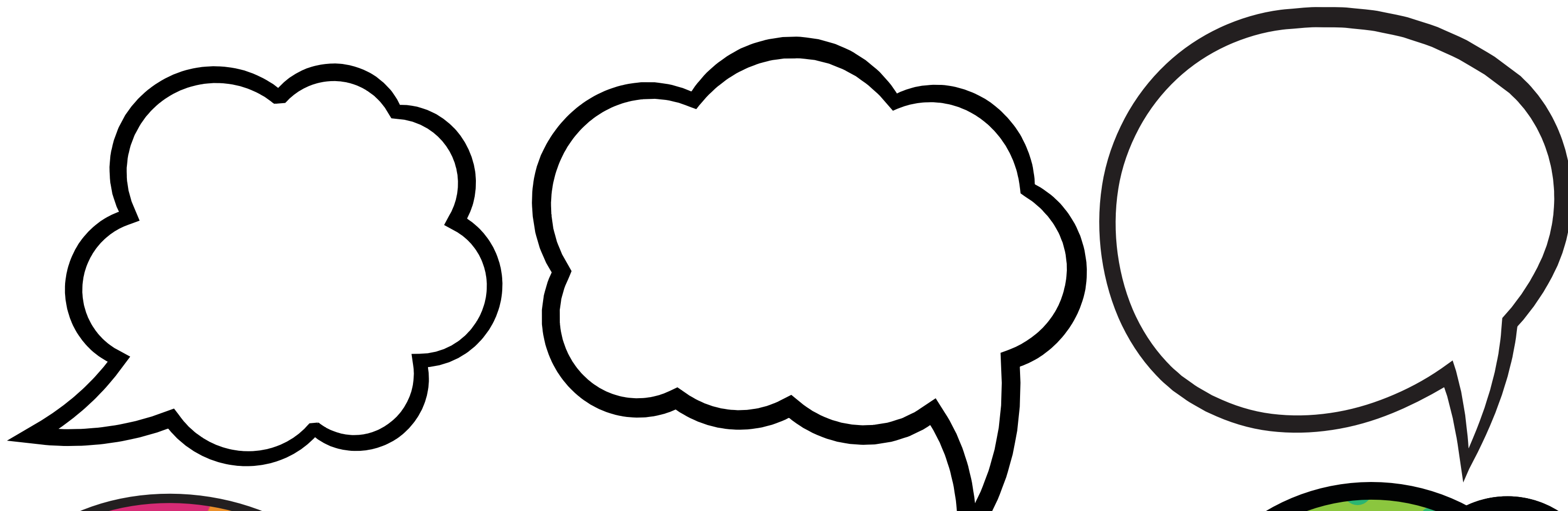
Name: _____



Waste monster truck talk

Imagine a day in the life of a waste monster truck. What exciting things would they see? If they could talk what would they say? Use the waste monster truck characters below to write some funny conversations.

Name: _____



I am paper. When you no longer need me, please put me in the yellow-lid recycling bin.

Feed your Mini Muncher

What items belong in your Mini Muncher kitchen caddy? Using pictures from magazines or supermarket catalogues, cut out the correct items that go into your Mini Muncher. Stick them inside the caddy. If you run out of room, use the space around the Mini Muncher.

Name: _____





cttg.sa.gov.au/waste