



CITY OF  
TEA TREE GULLY  
*Naturally Better*

# LIFT THE RIGHT LID

---

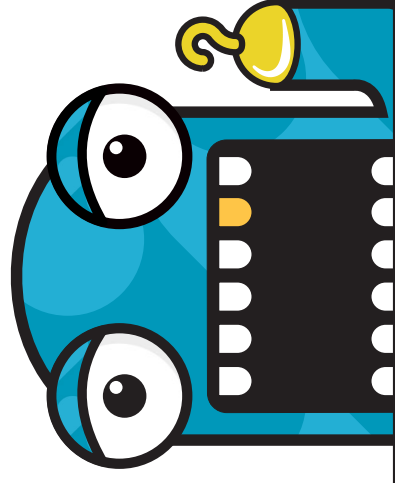
Classroom resources  
[cttg.sa.gov.au/waste](http://cttg.sa.gov.au/waste)



# LIFT THE RIGHT LID

You can make a big difference to the amount of waste going to landfill by putting items in the right bin.

**[cttg.sa.gov.au/waste](http://cttg.sa.gov.au/waste)**



## Feed your recycling bin

- ✓ Paper, newspapers and magazines
- ✓ Cardboard boxes (flattened), rolls and cartons
- ✓ Juice and milk cartons (rinsed and flattened)
- ✓ Glass bottles and jars (rinsed and lids off)
- ✓ Plastic bottles and containers (rinsed and lids off)
- ✓ Aluminium and steel cans (rinsed) and empty aerosol cans
- ✓ Foil trays and wrapping (rinsed and scrunched into a ball)
- ✓ Metal pots and pans
- ✓ Plastic toys (batteries removed)

## Feed your green organics bin

- ✓ Fruit and vegetable scraps
- ✓ Meat and seafood scraps and bones
- ✓ Dairy items
- ✓ Tea bags and coffee grounds
- ✓ Paper towels, serviettes and tissues
- ✓ Pizza boxes, cardboard burger boxes and greasy paper bags
- ✓ Shredded paper
- ✓ Nail clippings and hair
- ✓ Lawn clippings, leaves and weeds
- ✓ Small prunings and cuttings
- ✓ Pet poo  
(loose or in a compostable bag)

## Feed your landfill bin

- ✓ Single-use nappies
- ✓ Single-use coffee cups
- ✓ Rags and old clothing
- ✓ Ceramic and glass kitchenware
- ✓ Ropes and hoses
- ✓ Foam and polystyrene cups, trays and packaging
- ✓ Kitty litter crystals
- ✓ Wine bladders
- ✓ Video tapes



CITY OF

**TEA TREE GULLY**  
*Naturally Better*

# FEED YOUR RECYCLING BIN

---

- ✓ Paper, newspapers and magazines
- ✓ Cardboard boxes and cartons (flattened)
- ✓ Juice and milk cartons (rinsed and flattened)
- ✓ Glass bottles and jars (rinsed and lids off)
- ✓ Plastic bottles and containers  
(rinsed and lids off)
- ✓ Aluminium and steel cans (rinsed)  
and empty aerosol cans
- ✓ Foil trays and wrapping  
(rinsed and scrunched into a ball)
- ✓ Metal pots and pans
- ✓ Plastic toys

# FEED YOUR LANDFILL BIN

---

- ✓ Single-use nappies
- ✓ Single-use coffee cups
- ✓ Rags and old clothing
- ✓ Ceramic and glass kitchenware
- ✓ Ropes and hoses
- ✓ Foam and polystyrene cups, trays and packaging
- ✓ Kitty litter crystals
- ✓ Wine bladders
- ✓ Video tapes

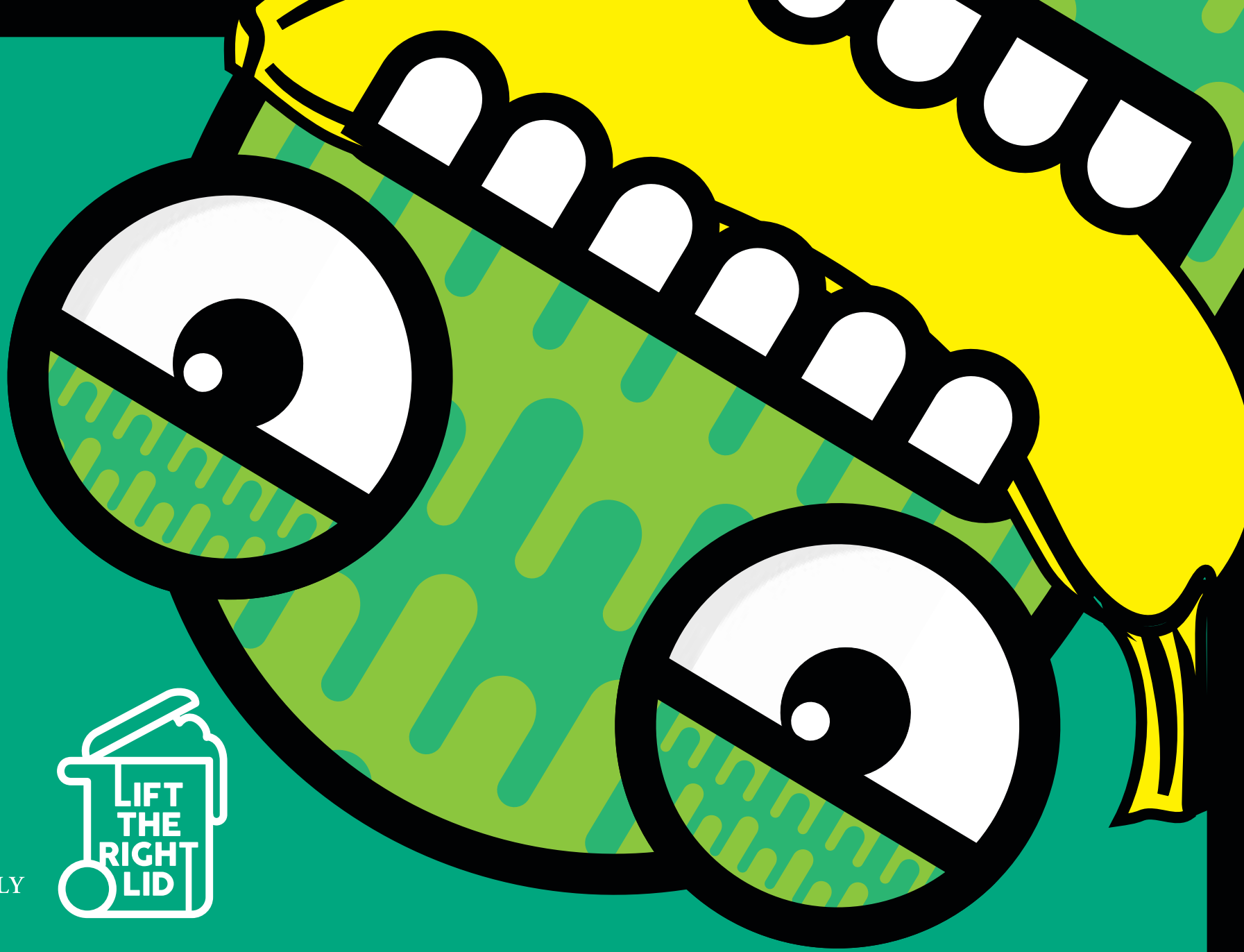


# FEED YOUR ORGANICS BIN

---

- ✓ Fruit and vegetable scraps
- ✓ Meat and seafood scraps and bones
- ✓ Dairy items
- ✓ Tea bags and coffee grounds
- ✓ Paper towels, serviettes and tissues
- ✓ Pizza boxes, cardboard burger boxes and greasy paper bags
- ✓ Shredded paper
- ✓ Nail clippings and hair
- ✓ Lawn clippings, leaves and weeds
- ✓ Small prunings and cuttings
- ✓ Pet poo  
(loose or in a compostable bag)





# FEED FOOD SCRAPS TO YOUR GREEN BIN

---

[cttg.sa.gov.au/waste](http://cttg.sa.gov.au/waste)

# FEED TISSUES TO YOUR GREEN BIN

---



[cttg.sa.gov.au/waste](http://cttg.sa.gov.au/waste)



# FEED PIZZA BOXES TO YOUR GREEN BIN

---

[cttg.sa.gov.au/waste](http://cttg.sa.gov.au/waste)







[cttg.sa.gov.au/waste](http://cttg.sa.gov.au/waste)