



# Hard waste collection

Residents living in the City of Tea Tree Gully can book two free hard waste collections per year. You can make a booking at any time, subject to availability, at [cttg.sa.gov.au/hardwaste](https://cttg.sa.gov.au/hardwaste)

## How do I make a hard waste booking?

To book your FREE hard waste collection call our waste collection service provider Solo Resource Recovery on 8295 5077 or visit [cttg.sa.gov.au/hardwaste](https://cttg.sa.gov.au/hardwaste) and click the online booking link.

City of Tea Tree Gully residents can book two free hard waste collections per calendar year, subject to availability.

## Can I put out items without booking a hard waste collection?

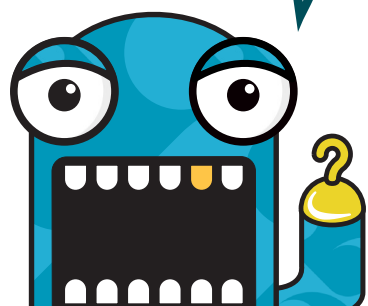
No. All waste that is put out without a hard waste booking is considered illegal dumping. Illegal dumping is an offence. A fine may be issued under the Local Government Act.

## Preparing your hard waste for collection

- Select the items you want to dispose of, ensuring they are eligible for collection
- Check if your items can be placed in your recycling or green waste bin
- The day before your items are to be collected, place them neatly on the kerbside, clear of the footpath and road
- Remove doors from fridges, freezers and washing machines
- Lay down tall items (e.g. wardrobes) and break up large items, if possible
- Do not stack your waste too high
- Safely maintain all items until they are collected.

### TOO GOOD TO THROW AWAY?

Have you thought about holding a garage sale, selling your items online or donating them to charity.

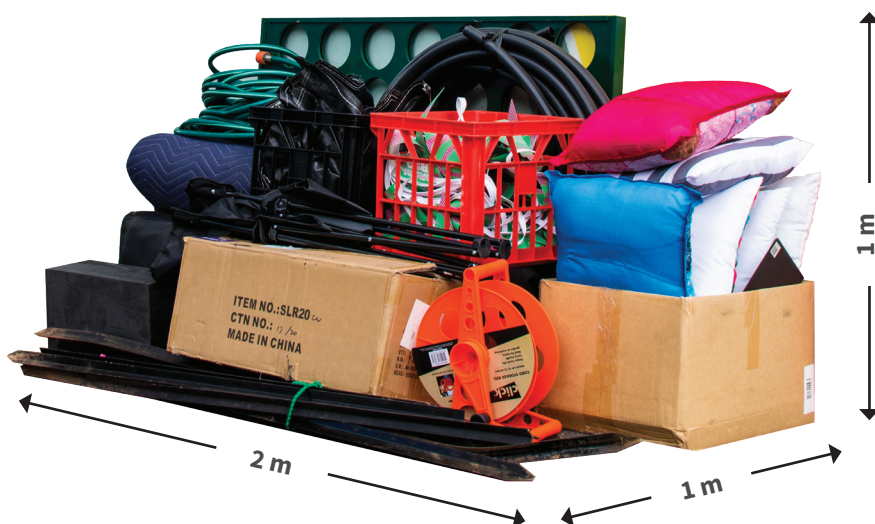


### How much can I put out?

You may dispose of up to two cubic metres (2 m x 1 m x 1 m) of hard waste per collection.

Items heavier than 50 kg or longer than 1.5 m **will not** be removed.

Excess or non-acceptable waste will **not** be collected, and it is your responsibility to dispose of it appropriately.



#### Items accepted

- Furniture and bedding
- White goods, including fridges, freezers, washing machines, stoves and dryers. Lids and doors must be removed
- Electrical equipment **excluding** e-waste (e-waste includes TVs, computers, monitors, projectors, printers, as well as parts and accessories)
- Scrap metal and timber items up to 1.5 m in length
- Tools and gardening equipment
- Carpet and linoleum rolled and tied with rope, **not** wire
- Kitchenware, including pottery and crockery
- Pallets - broken and bundled.

#### Items not accepted

- Items heavier than 50 kg or longer than 1.5 m **will not** be removed
- Recyclables that can be placed in your yellow recycling bin (e.g. empty paint tins and cardboard)
- Green waste that can be placed in your green organics bin (e.g. branches and stumps)
- E-waste (e.g. TVs, computers, monitors, projectors, printers, as well as parts and accessories)
- Liquid, chemical or hazardous waste including paint
- Vehicle bodies or parts, including engines, body panels, tyres and batteries
- Building materials, including bricks, concrete, plasterboard, dirt or rocks
- Items in plastic bags, including domestic waste
- Gas bottles, fire extinguishers or asbestos
- Commercial waste
- Ceramics (e.g. toilets and basins).

## How do I dispose of excess material or items that cannot be collected?

### Enviro Care Sunday ([cttg.sa.gov.au/enviro](http://cttg.sa.gov.au/enviro))

Free green waste drop-off service for City of Tea Tree Gully residents including leaves, lawn cuttings and branches up to 20 cm in diameter (stumps or logs are not accepted).

### Donate, sell or upcycle

Are your items in good condition? You may be able to sell them or donate them to charity. You could use websites like Gumtree and eBay, or opt for a traditional garage sale.

### Electronic waste

Need to dispose of TVs, computers, monitors, projectors, printers, including parts and accessories, visit our website [cttg.sa.gov.au/ewaste](http://cttg.sa.gov.au/ewaste) for recycling options.

### Mobile phones, batteries and printer cartridges

These items can be disposed of at the recycling station in the Civic Centre foyer, 571 Montague Road, Modbury.