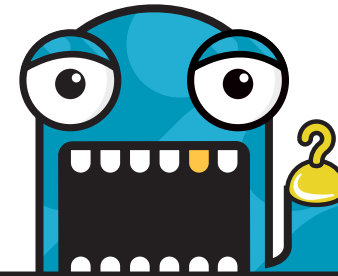


LIFT THE RIGHT LID

You can make a big difference to the amount of waste going to landfill by putting items in the right bin.

cttg.sa.gov.au/waste



Feed your recycling bin

- ✓ Paper, newspapers and magazines
- ✓ Cardboard boxes (flattened), rolls and cartons
- ✓ Juice and milk cartons (rinsed and flattened)
- ✓ Glass bottles and jars (rinsed and lids off)
- ✓ Plastic bottles and containers (rinsed and lids off)
- ✓ Aluminium and steel cans (rinsed) and empty aerosol cans
- ✓ Foil trays and wrapping (rinsed and scrunched into a ball)
- ✓ Metal pots and pans
- ✓ Plastic toys (batteries removed)

Feed your green organics bin

- ✓ Fruit and vegetable scraps
- ✓ Meat and seafood scraps and bones
- ✓ Dairy items
- ✓ Tea bags and coffee grounds
- ✓ Paper towels, serviettes and tissues
- ✓ Pizza boxes, cardboard burger boxes and greasy paper bags
- ✓ Shredded paper and cardboard
- ✓ Nail clippings and hair
- ✓ Lawn clippings, leaves and weeds
- ✓ Small prunings and cuttings
- ✓ Pet poo (loose or in a compostable bag)

Feed your landfill bin

- ✓ Single-use nappies
- ✓ Single-use coffee cups
- ✓ Rags and old clothing
- ✓ Ceramic and glass kitchenware
- ✓ Ropes and hoses
- ✓ Foam and polystyrene cups, trays and packaging
- ✓ Kitty litter crystals
- ✓ Wine bladders
- ✓ Video tapes

Make it easier with a Mini Muncher kitchen caddy

This convenient benchtop bin allows you to recycle organic material and food scraps with ease. Best of all, your free Mini Muncher comes with a year's supply of compostable bags which, when full, go in your organics bin.

Additional rolls of compostable bags can be collected from the City of Tea Tree Gully Civic Centre in Modbury.

For more information and availability, visit cttg.sa.gov.au/muncher

Too big to go in your green organics bin?

The City of Tea Tree Gully provides residents with free drop-off events for green organic waste on selected days throughout the year.

For dates and full list of what is and is not accepted, visit cttg.sa.gov.au/enviro

It's not HARD to book a free collection

Residents can book up to two free hard waste collections per calendar year, and you can put out up to two cubic metres (2m x 1m x 1m) of waste per collection.

To book a hard waste collection, visit cttg.sa.gov.au/hardwaste or call Solo Resource Recovery on 8295 5077.

Put your items neatly on the nature strip clear of the footpath and road the day before collection.

For more information, visit:

cttg.sa.gov.au/waste or whichbin.sa.gov.au



Hazardous items don't belong in your bins

Hazardous items, such as garden chemicals, insect repellents, cleaners, automotive products and acids cannot be placed in your red-lid general waste bin. Instead, these items should be taken to drop-off points for specialised recycling and disposal. Disposing of hazardous waste correctly allows for resources to be recovered and reused. It's also better for the environment.

Visit cttg.sa.gov.au/hazard for more information.

Household chemicals, paint and other items

Unwanted paint, household chemicals and selected items can be recycled through your local collection centre listed below.

Campbelltown Works Depot

6 Newton Road, Campbelltown
Monday–Friday, 8am–3pm

NAWMA Resource Recovery Centre

Gate 3, Bellchambers Road
Edinburgh North
Monday–Friday, 8am–4pm

Visit greenindustries.sa.gov.au for a full list of accepted items.

Does it have a cord or battery?

Unplug N' Drop

Anything that plugs into a power point, uses a charger or is powered by a battery can be recycled through Unplug N' Drop collection facilities at your local Bunnings hardware store. For other locations, visit electronicrecyclingaustralia.com

Household batteries, printer cartridges and mobile phones

These items can be recycled using the drop-off station in the foyer of the City of Tea Tree Gully Civic Centre in Modbury.

What to do with soft plastics

Clean single-use plastic can all be recycled through REDcycle drop-off bins at your local Coles or Woolworths supermarket. This includes plastic bags, wraps and films, such as shopping bags, cling film, lolly and biscuit packets, fresh fruit and vegetable bags, and bread bags.

To find a location near you, visit redcycle.net.au